

DOUBLE J FARMS 49TH ANNUAL *Bull & Mature Herd Dispersal Sale*

EVERY 2016 MODEL & OLDER FEMALE SELLS – ALSO ANY FEMALE CALVING AFTER MARCH 15TH



**Double J
Farms**

Friday, January 27, 2023 12:00 Noon • 48672 252nd Street • Garretson, SD 57030

Welcome

DOUBLE J FARMS 49TH ANNUAL SALE

Welcome to the Double J Farms 49TH ANNUAL PRODUCTION SALE!

Our third-generation family farm would like to thank all of you for taking the time to show interest in our program whether you are new or if you have been here for decades. We thank you all for the opportunity to work with you and we look forward to doing so in years to come.



My parents, Bob and Betty Julson (herd prefix DJF), started AI'ing their first Simmental cattle 51 years ago and have not looked back since. It was in 1990 when I, Kipp Julson (herd prefix KRJ), joined the family operation with my own cows through the process of embryo transfer. My dad and I have devoted a lot into this cow herd throughout the years. Strong maternal traits, udder quality, fertility, fleshing ability, disposition, soundness, and performance are bred in this herd with predictability. Due to my current health situation, we need to reduce numbers. Therefore, we are selling every 2016 and older model cow as well as everything calving after March 16 with nothing held back. Take advantage of this opportunity to select individuals and genetics that can advance your program significantly in the future! I truly believe that our cows make the difference!

We invite you to call, text, or stop anytime to view and study this set of cattle. There will be videos of the entire offering on DV Auction and our website at the beginning of January. We certainly hope you can be with us sale day, but if not, the sale can be viewed live online at DV Auction at noon. If you have any questions or need assistance, don't hesitate to contact myself or any of our staff. We look forward to seeing you on sale day! Sale starts at 12:00 Noon!

KIPP JULSON & FAMILY

EVERYONE THAT PURCHASES WILL BE ENTERED IN A DRAWING FOR THIS COOLER AT THE END OF THE SALE!



Marketing Representatives:

- Kipp Julson 605-351-9088
- Justin Dikoff, DV Auction/Auctioneer 605-290-0635
- Kelly Schmidt, Cattle Business Weekly 406-599-2395
- Andrew Swanson, Tri-State Neighbor 507-829-4133
- Todd Finke, Consultant 701-240-7711
- Jeremie Ruble, Consultant 406-581-7940
- Lindsey Wolles, Consultant/Phone Bids 605-496-2487
- Zach Lutz, Consultant/Phone Bids 605-695-2173
- Phillip Eggers, Special Assignment 605-351-5438
- Bill Zimmerman, ASA Representative 612-875-9509

Watch & Bid Online:

Sale will be broadcasted live on DV Auction for those of you that want to participate online. Please register with DV Auction a couple days ahead of the sale. Contact Justin Dikoff with DV Auction at 605-290-0635 or myself at 605-351-9088 if you need help registering.



- Photography:** Photos were taken November 28, 2022, by LZ Livestock + Photography
 - Riley Zoss-Littau 605-842-6625
- Clerking:** Katie Bennett 605-864-0369
- Catalog Design:** Kim Banks Graphic Design 507-530-0914

Directions to Sale Site: Visitors Always Welcome!

From I29 take Exit 94 east to 487th Avenue, then go south 2 miles and then west 1/4 mile

From I90 take Exit 410 north to Garretson, then go east 1 mile, then north 1 mile and then west 1/4 mile

Sale & Cattle Location: 48672 252nd St, Garretson, SD

Hotel Accommodations:

Quality Inn 605-644-7236

1105 N Splitrock Blvd, Brandon, SD 57005

Holiday Inn Express & Suites 605-582-2901

1103 N Splitrock Blvd, Brandon, SD 57005

Announcements:

Any announcements made sale day take precedence over printed material in the catalog or other printed material associated with this sale. Anyone attending the farm or sale attends at their own risk and will not be held responsible for any personal injury for attending this sale.

Updates & Sale Order:

Additional information including pictures and videos as well as the sale order will be posted on our website at www.doublejsimmentals.com and www.dvauction.com. Any postponements will be posted on DV Auction, Facebook, Double J Farms website or you can call a representative.

EPDs:

12/14/2022 EPDs are provided. Please note that EPDs may change from the time printed until the registration papers are transferred.

Terms & Guarantee: All cattle sell under the Suggested Terms and Conditions of their respected breed under the American Simmental Association or American Angus Association and sell with a registration paper. Bulls were weaned in August alongside their dams with nose weaners. They were brought home to the lot and developed slowly and not over conditioned. As proven with our ADG and WDA, we do not believe in feeding a high corn ration for a short period of time to show a high ADG. Our ADG is from weaning date to yearling weight date. Bulls will be wintered, semen evaluated, complete vaccination program, magnets and guaranteed with delivery available. The bred females are pregnancy checked with a Scour Guard 4KC shot and due to calve within the period printed.

Vets:

Sweet Grass Veterinary Service

Erik Holum 605-928-8387

Windy Ridge Vet Clinic

Brett Kroeze (vet & embryologist) 507-825-3336

Insurance:

We take every precaution for the care and safety of your purchases. Insurance will be available on sale day.

Martin Trudeau Insurance 1-877-920-0872

Ray Trudeau 605-770-5170

Retained Semen Interest:

Double J Farms retains 1/3 semen interest/revenue on any bull selling and in herd use semen. Any semen collection for herd use would be at our expense and the buyer's convenience.

Sale Day Phone:

If you would like to bid by phone, please call a representative or myself with plenty of time ahead the sale to ensure we have your needs covered. We will guarantee our sight unseen selections for you.

Trucking:

We will deliver most of our bulls ourselves after they are semen tested in April. Truckers will be available to go anywhere needed at a minimum cost outside our free trucking area. We would appreciate pick up or delivery arrangements of the females to be made within a few days of the sale.

Willow Creek Transport 712-210-4703

Brandon Bertsche 815-867-0547

Dick Coleman Trucking 765-461-0945

KIPP JULSON || Cell 605-351-9088 || Sale Day Landline 605-594-2310
Check out all sale videos online early in the New Year at www.DVAuction.com

Friday, January 27, 2023 • 12:00 Noon • Garretson, SD

Tag 201 KRJ K201

Act BW: **80 lbs.**
Adj WW: **840 lbs.**
Adj YW: **1529 lbs.**

ASA#4090257 BD: 1/16/22 Tattoo: K201
Homo Black Homo Polled Purebred SM Bull

ADG: **4.36**
WDA: **4.01**
Adj Scrotal: **36.9**
Frame Score: **6.0**

CCR COWBOY CUT 5048Z
SFG COWBOY LOGIC D627
SFG QUEEN B01
FELT FIREMAN 911C
MISS HONESTY H03
KGH MISS EPIC 4216B

CE:	12	DOC:	15.3
BW:	2.6	CW:	49.2
WW:	102	YG:	-0.36
YW:	154	Marb:	-0.27
ADG:	-0.33	BF:	-0.078
MCE:	7	REA:	1.01
Milk:	26	API:	143
MWW:	77	TI:	95
Stay:	14		

A stronger aged bull that ranks in the top 2% and 3% for YW and WW with great carcass traits and TI in the top 5%.



TAG 201 – KRJ K201

Tag 205 KRJ K205

Act BW: **69 lbs.**
Adj WW: **697 lbs.**
Adj YW: **1294 lbs.**

ASA#4090261 BD: 2/4/22 Tattoo: K205
Homo Black Homo Polled 3/4 SM 1/4 AN Bull

ADG: **3.78**
WDA: **3.65**
Adj Scrotal: **33.4**
Frame Score: **5.2**

RUBYS TURNPIKE 771E
KRJ DAKOTA OUTLAW G974
BRKC DAPHNE DY37
CCR SANTA FE 9349Z
KRJ D610
KRJ ALL THAT B4133

CE:	7	DOC:	10.8
BW:	2.3	CW:	33.8
WW:	93	YG:	-0.47
YW:	143	Marb:	-0.04
ADG:	-0.31	BF:	-0.103
MCE:	2	REA:	0.96
Milk:	24	API:	126
MWW:	70	TI:	84
Stay:	16		

This bull ranks in the top 10% for YW, WW, and REA. Twin to 206 and their dam posts 105 WW ratio on 4 calves and sells as lot 40.



KRJ DAKOTA OUTLAW G974 – SIRE

Tag 206 KRJ K206

Act BW: **73 lbs.**
Adj WW: **697 lbs.**
Adj YW: **1350 lbs.**

ASA#4090262 BD: 2/4/22 Tattoo: K206
Homo Black Homo Polled 3/4 SM 1/4 AN Bull

ADG: **4.13**
WDA: **3.79**
Adj Scrotal: **33.4**
Frame Score: **6.5**

RUBYS TURNPIKE 771E
KRJ DAKOTA OUTLAW G974
BRKC DAPHNE DY37
CCR SANTA FE 9349Z
KRJ D610
KRJ ALL THAT B4133

CE:	7	DOC:	10.8
BW:	2.3	CW:	33.8
WW:	93	YG:	-0.47
YW:	143	Marb:	-0.04
ADG:	-0.31	BF:	-0.103
MCE:	2	REA:	0.96
Milk:	24	API:	126
MWW:	70	TI:	84
Stay:	16		

Similar to his twin brother, this bull ranks in the top 10% for yearling weight, weaning weight, and ribeye. In addition, he has a 4.13 ADG.



TAG 206 – KRJ K206



TAG 210 - KRJ K210

Tag 210 KRJ K210

Act BW: 73 lbs.
Adj WW: 743 lbs.
Adj YW: 1328 lbs.

ASA#4090265 BD: 2/9/22 Tattoo: K210
Homo Black Homo Polled 3/4 SM 1/4 AN Bull

ADG: 3.74
WDA: 3.59
Adj Scrotal: 38.2
Frame Score: 6.3

HOOK'S BEACON 56B
KBHR HIGH ROAD E283
WS MISS SUGAR C4
TKCC CLASSIFIED

KRJ H017

DOUBLE J MISS D604

CE:	15	DOC:	13.7
BW:	-1.9	CW:	42.7
WW:	83	YG:	-32
YW:	127	Marb:	.41
ADG:	.27	BF:	-.053
MCE:	8	REA:	1.01
Milk:	29	API:	145
MWW:	70	TI:	89
Stay:	15		

Potential heifer bull with good WW, Milk, and carcass data to back him up!

Pictures taken November 28th.

Videos will be available at

www.DVAuction.com of every

animal selling in this sale.

Cattle can be viewed anytime at the

family farm. Give us a call!

Tag 214 KRJ K214

Act BW: 92 lbs.
Adj WW: 724 lbs.
Adj YW: 1339 lbs.

ASA#4090268 BD: 2/12/22 Tattoo: K214
Homo Black Homo Polled Purebred SM Bull

ADG: 3.91
WDA: 3.59
Adj Scrotal: 38.4
Frame Score: 5.9

HOOK'S BEACON 56B
KBHR HIGH ROAD E283
WS MISS SUGAR C4
COLORADO BRIDLE BIT E752

KRJ H083

KRJ F881

CE:	14	DOC:	14.5
BW:	.6	CW:	41.7
WW:	85	YG:	-33
YW:	131	Marb:	.38
ADG:	.29	BF:	-.062
MCE:	7	REA:	.96
Milk:	28	API:	152
MWW:	71	TI:	90
Stay:	16		

12 EPDs in the top 25% with API in the top 15% and TI in the top 10%! Out of a first calf heifer.



TAG 215 - KRJ K215

Tag 215 KRJ K215

Act BW: 79 lbs.
Adj WW: 804 lbs.
Adj YW: 1313 lbs.

ASA#4090269 BD: 2/12/22 Tattoo: K215
Homo Black Homo Polled Purebred SM Bull

ADG: 3.24
WDA: 3.53
Adj Scrotal: 38.4
Frame Score: 5.4

WS ALL-AROUND Z35
OMF EPIC E27
OMF TIME LESS B100
LCDR WITNESS 541C

KRJ H024

KRJ ALL THAT B4133

CE:	12	DOC:	12.9
BW:	.4	CW:	44.8
WW:	97	YG:	-29
YW:	144	Marb:	.11
ADG:	.29	BF:	-.065
MCE:	6	REA:	.85
Milk:	23	API:	141
MWW:	71	TI:	90
Stay:	17		

Eye appealing bull with good grow and terminal index in the top 15%! Grandam sells as lot 45.

Tag 218 DJF K218

Act BW: 66 lbs.
Adj WW: 750 lbs.
Adj YW: 1432 lbs.

ASA#4090272 BD: 2/13/22 Tattoo: K218
Homo Black Homo Polled 3/4 SM 1/4 AN Bull

ADG: 4.34
WDA: 3.84
Adj Scrotal: 38.4
Frame Score: 5.4

CCR ANCHOR 9071B
W/C NIGHT WATCH 84E
MISS WERNING KP 8543U
HOOK'S BLACK HAWK 50B

DJF H059

DJF F8104

CE:	19	DOC:	15.1
BW:	-4.2	CW:	32.7
WW:	78	YG:	-.27
YW:	115	Marb:	.22
ADG:	.23	BF:	-.033
MCE:	10	REA:	.90
Milk:	26	API:	144
MWW:	65	TI:	83
Stay:	17		

Potential heifer bull that shows us a good spread from birth to yearling. Posts a 4.34 ADG.



TAG 218 – DJF K218

Tag 221 KRJ K221

Act BW: 96 lbs.
Adj WW: 794 lbs.
Adj YW: 1400 lbs.

ASA#4090275 BD: 2/13/22 Tattoo: K221
Homo Black Baldy Homo Polled Purebred SM Bull

ADG: 3.84
WDA: 3.92
Adj Scrotal: 41.9
Frame Score: 6.6

WS PROCLAMATION E202
LBR5 GENESIS G69
LBR DIANA D69
RBS BOISE B63

KRJ F846

KRJ ALL THAT B4133

CE:	9	DOC:	13.0
BW:	2.2	CW:	48.9
WW:	97	YG:	-.30
YW:	141	Marb:	.55
ADG:	.27	BF:	-.051
MCE:	5	REA:	1.06
Milk:	26	API:	160
MWW:	75	TI:	99
Stay:	18		

Black white faced bull with weaning weight, yearling, and carcass traits in the top 10%! Grandam sells as lot 45.



TAG 221 – KRJ K221

Tag 223 DJF K223

Act BW: 79 lbs.
Adj WW: 743 lbs.
Adj YW: 1388 lbs.

ASA#4090277 BD: 2/13/22 Tattoo: K223
Homo Black Homo Polled 1/2 SM 1/2 AN Bull

ADG: 4.13
WDA: 3.90
Adj Scrotal: 42.4
Frame Score: 6.4

SYDGEN EXCEED 3223
SYDGEN ENHANCE
SYDGEN RITA 2618
RBS BOISE B63

DJF F896

DJF C583

CE:	14	DOC:	13.4
BW:	-1.0	CW:	43.7
WW:	80	YG:	-.19
YW:	127	Marb:	.51
ADG:	.29	BF:	-.038
MCE:	8	REA:	.74
Milk:	24	API:	148
MWW:	64	TI:	88
Stay:	15		

Enhance son with all purpose index in the top 25% as well as a 4.13 ADG.



SYDGEN ENHANCE— SIRE

Tag 229 DJF K229

Act BW: 68 lbs.
Adj WW: 753 lbs.
Adj YW: 1341 lbs.

ASA#4090282 BD: 2/14/22 Tattoo: K229
Homo Black Homo Polled 3/4 SM 1/4 AN Bull

ADG: 3.75
WDA: 3.60
Adj Scrotal: 38
Frame Score: 5.6

WS ALL-AROUND Z35
OMF EPIC E27
OMF TIME LESS B100
TJ FROSTY 318E

DJF H032

DJF E739

CE:	16	DOC:	14.3
BW:	-2.5	CW:	44.5
WW:	89	YG:	-.25
YW:	134	Marb:	.20
ADG:	-.28	BF:	-.053
MCE:	8	REA:	.83
Milk:	24	API:	141
MWW:	68	TI:	87
Stay:	16		

Potential heifer bull with well balanced EPDs and a great cow family to back him up.



TAG 229 – DJF K229

Tag 232 DJF K232

Act BW: 90 lbs.
Adj WW: 678 lbs.
Adj YW: 1214 lbs.

ASA#4090284 BD: 2/14/22 Tattoo: K232

Homo Black Baldy Homo Polled Purebred SM Bull

ADG: 3.39
WDA: 3.47
Adj Scrotal: 36.5
Frame Score: 6.4

GW-WBF SUBSTANCE 820Y
WBF SIGNIFICANT B132
WBF HEBE X376
WELSHS DEW IT RIGHT 067T

DJF D601

DJF B481

CE:	13	DOC:	16.8
BW:	.0	CW:	31.6
WW:	71	YG:	-.32
YW:	111	Marb:	.23
ADG:	-.25	BF:	-.069
MCE:	7	REA:	.74
Milk:	26	API:	141
MWW:	61	TI:	79
Stay:	17		

This BWF bull's dam, lot 41, has produced 3 maternal brothers in past sales.



WBF SIGNIFICANT B132 – SIRE

Tag 234 KRJ K234

Act BW: 99 lbs.
Adj WW: 838 lbs.
Adj YW: 1438 lbs.

ASA#4090286 BD: 2/14/22 Tattoo: K234

Red Homo Polled 3/4 SM 1/4 AR Bull

ADG: 3.81
WDA: 4.07
Adj Scrotal: 42.5
Frame Score: 6.4

CDI HOMETOWN 246A
MFSR ROUNDUP 665H
MFSR BIG SKY 351C
NBAR HAMLEY S913

PGF RED GAL F746

PGF RED GAL A582

CE:	6	DOC:	9.1
BW:	4.5	CW:	30.2
WW:	89	YG:	-.41
YW:	130	Marb:	.12
ADG:	-.26	BF:	-.080
MCE:	3	REA:	.93
Milk:	30	API:	112
MWW:	75	TI:	76
Stay:	17		

A red bull with an outcross pedigree that combines good growth, maternal, and carcass traits with a 4.07 weight per day of age!



TAG 234 – KRJ K234

Tag 236 DJF K236

Act BW: **81 lbs.** ASA#4090288 BD: 2/14/22 Tattoo: K236
 Adj WW: **782 lbs.** *Homo Black Homo Polled Purebred SM Bull*
 Adj YW: **1411 lbs.**

ADG:	3.98
WDA:	3.77
Adj Scrotal:	34.5
Frame Score:	5.9
CE:	15
BW:	-1.4
WW:	90
YW:	136
ADG:	.29
MCE:	7
Milk:	28
MWW:	73
Stay:	18
DOC:	13.7
CW:	46.4
YG:	-.45
Marb:	.31
BF:	-.067
REA:	1.36
API:	160
TI:	95

HOOK'S BEACON 56B
KBHR HIGH ROAD E283
 WS MISS SUGAR C4
 HOOK'S BLACK HAWK 50B

DJF H041

DJF F875

Potential heifer bull that has a great EPD profile with 15 traits in the top 25%!

Tag 238 KRJ K238

Act BW: **95 lbs.** ASA#4090290 BD: 2/14/22 Tattoo: K238
 Adj WW: **719 lbs.** *Hetero Black Homo Polled Purebred SM Bull*
 Adj YW: **1367 lbs.**

ADG:	4.09
WDA:	3.85
Adj Scrotal:	38
Frame Score:	6.1
CE:	9
BW:	3.0
WW:	87
YW:	138
ADG:	.32
MCE:	4
Milk:	25
MWW:	68
Stay:	11
DOC:	11.0
CW:	34.1
YG:	-.57
Marb:	-.06
BF:	-.138
REA:	1.02
API:	110
TI:	78

WBFS SIGNIFICANT B132
RUBYS TURNPIKE 771E
 RUBYS MISS CLEO 240Z
 LLSF UPRISING Z925

BRKC DAPHNE DY37

HSF/HS SCARLETTY165

Here's a bull that combines growth and carcass traits towards the top with a 4.09 ADG.

Tag 244 DJF K244

Act BW: **87 lbs.** ASA#4090296 BD: 2/15/22 Tattoo: K244
 Adj WW: **790 lbs.** *Homo Black Homo Polled Purebred SM Bull*
 Adj YW: **1315 lbs.**

ADG:	3.33
WDA:	3.51
Adj Scrotal:	37.5
Frame Score:	5.7
CE:	14
BW:	-.2
WW:	83
YW:	118
ADG:	.22
MCE:	7
Milk:	28
MWW:	70
Stay:	14
DOC:	14.2
CW:	27.8
YG:	-.38
Marb:	.18
BF:	-.068
REA:	.89
API:	136
TI:	85

CCR ANCHOR 9071B
W/C NIGHT WATCH 84E
 MISS WERNING KP 8543U
 CDI INNOVATOR 325D

DJF H065

DJF D6134

This bull posts a 102 WW ratio and great maternal traits while being out of a 1st calf heifer.

Tag 245 KRJ K245

Act BW: **99 lbs.** ASA#4090297 BD: 2/15/22 Tattoo: K245
 Adj WW: **809 lbs.** *Homo Black Homo Polled 1/2 SM 1/2 AN Bull*
 Adj YW: **1438 lbs.**

ADG:	4.00
WDA:	4.01
Adj Scrotal:	40.5
Frame Score:	6.6
CE:	11
BW:	1.6
WW:	87
YW:	128
ADG:	.26
MCE:	3
Milk:	21
MWW:	64
Stay:	15
DOC:	14.1
CW:	35.4
YG:	-.12
Marb:	.27
BF:	-.032
REA:	.46
API:	128
TI:	80

ACW IRONHIDE 395Y
TJ FROSTY 318E
 TJ 58B
 SILVEIRAS STYLE 9303

SGL STYLISH LADY 921G

HEGES UNLIKELY ENCOUNTER

Stylish herd sire prospect comes in with a 105 WW ratio and WW EPD in the top 15%! This outstanding bull posted a 4.01 WDA and 4.00 ADG.

Tag 253 DJF K253

Act BW: **94 lbs.** ASA#4090304 BD: 2/17/22 Tattoo: K253
 Adj WW: **806 lbs.** *Homo Black Homo Polled 1/2 SM 1/2 AN Bull*
 Adj YW: **1486 lbs.**

ADG:	4.34
WDA:	4.14
Adj Scrotal:	40.1
Frame Score:	6.9
CE:	13
BW:	.0
WW:	89
YW:	142
ADG:	.33
MCE:	7
Milk:	22
MWW:	67
Stay:	16
DOC:	15.0
CW:	46.7
YG:	-.07
Marb:	.68
BF:	-.016
REA:	.59
API:	159
TI:	95

SYDGEN EXCEED 3223
SYDGEN ENHANCE
 SYDGEN RITA 2618
 CCR COWBOY CUT 5048Z

DJF G907

DJF D601

This large framed, good growth bull comes in with high carcass traits and a 4.34 ADG. His dam sells as lot 28.



TAG 245 - KRJ K245

KIPP JULSON || Cell 605-351-9088 || Sale Day Landline 605-594-2310
 Check out all sale videos online early in the New Year at www.DVAuction.com



TAG 254 - KRJ K254

Tag 254 KRJ K254

Act BW: 93 lbs.
Adj WW: 835 lbs.
Adj YW: 1484 lbs.

ASA#4090305 BD: 2/17/22 Tattoo: K254
Homo Black Homo Polled Purebred SM Bull

ADG: 4.11
WDA: 4.14
Adj Scrotal: 41.1
Frame Score: 6.7

WS PROCLAMATION E202
LBRS GENESIS G69
LBR DIANA D69
HPF OPTIMIZER A512

KRJ F8103

KRJ A387

CE:	9	DOC:	13.5
BW:	2.0	CW:	55.3
WW:	99	YG:	-.33
YW:	154	Marb:	.51
ADG:	.34	BF:	-.067
MCE:	5	REA:	1.09
Milk:	26	API:	164
MWW:	76	TI:	100
Stay:	19		

This bull's growth traits are in the top 5% and an impressive TI in the top 2%. Dam sells as lot 29.

Tag 261 DJF K261

Act BW: 67 lbs.
Adj WW: 741 lbs.
Adj YW: 1314 lbs.

ASA#4090312 BD: 2/18/22 Tattoo: K261
Homo Black Homo Polled Purebred SM Bull

ADG: 3.63
WDA: 3.48
Adj Scrotal: 37.7
Frame Score: 5.9

CCR ANCHOR 9071B
W/C NIGHT WATCH 84E
MISS WERNING KP 8543U
BCLR CASH FLOW C820

DJF H0125

DJF D638

CE:	16	DOC:	14.1
BW:	-2.4	CW:	29.0
WW:	80	YG:	-.46
YW:	117	Marb:	.11
ADG:	.23	BF:	-.069
MCE:	8	REA:	1.14
Milk:	24	API:	144
MWW:	64	TI:	84
Stay:	16		

Potential heifer bull comes from a 1st calf heifer which was our #5 WW in 2020.

Tag 263 DJF K263

Act BW: 94 lbs.
Adj WW: 766 lbs.
Adj YW: 1491 lbs.

ASA#4090314 BD: 2/18/22 Tattoo: K263
Homo Black Homo Polled Purebred SM Bull

ADG: 4.58
WDA: 4.19
Adj Scrotal: 41.7
Frame Score: 6.4

RUBYS TURNPIKE 771E
KRJ DAKOTA OUTLAW G974
BRKC DAPHNE DY37
RBS BOISE B63

DJF E785

DJF A375

CE:	9	DOC:	11.2
BW:	2.6	CW:	28.4
WW:	87	YG:	-.61
YW:	131	Marb:	.04
ADG:	.28	BF:	-.135
MCE:	5	REA:	1.09
Milk:	25	API:	123
MWW:	68	TI:	81
Stay:	15		

Good growth bull with a 106 YW ratio at 1491 lbs. His YG and BF are in the top 1% as well as a great REA and 4.58 ADG. Dam sells as lot 30.

Tag 265 DJF K265

Act BW: 84 lbs.
Adj WW: 756 lbs.
Adj YW: 1404 lbs.

ASA#4090316 BD: 2/18/22 Tattoo: K265
Homo Black Homo Polled 1/2 SM 1/2 AN Bull

ADG: 4.15
WDA: 3.90
Adj Scrotal: 40.2
Frame Score: 7.0

SYDGEN EXCEED 3223
SYDGEN ENHANCE
SYDGEN RITA 2618
BBS TRUE JUSTICE B10

DJF G969

DOUBLE J MISSY182

CE:	13	DOC:	13.6
BW:	-.4	CW:	47.1
WW:	85	YG:	-.16
YW:	141	Marb:	.53
ADG:	.35	BF:	-.041
MCE:	8	REA:	.67
Milk:	25	API:	150
MWW:	67	TI:	90
Stay:	15		

Bigger frame bull that has all purpose EPDs across the board in addition to a 4.15 ADG.

Tag 267 KRJ K267

Act BW: 97 lbs.
Adj WW: 829 lbs.
Adj YW: 1488 lbs.

ASA#4090318 BD: 2/18/22 Tattoo: K267
Homo Black Homo Polled Purebred SM Bull

ADG: 4.17
WDA: 4.16
Adj Scrotal: 40.2
Frame Score: 7.0

WS PROCLAMATION E202
LBRS GENESIS G69
LBR DIANA D69
CCR SANTA FE 9349Z

KRJ F806

CMW ML GINGER 101D

CE:	8	DOC:	12.0
BW:	2.4	CW:	46.3
WW:	103	YG:	-.30
YW:	152	Marb:	.56
ADG:	.31	BF:	-.053
MCE:	5	REA:	.99
Milk:	23	API:	160
MWW:	74	TI:	101
Stay:	17		

The Genesis calves have high growth with added carcass with this bull's API in the top 10% and TI in the top 2%.

KIPP JULSON || Cell 605-351-9088 || Sale Day Landline 605-594-2310
Check out all sale videos online early in the New Year at www.DVAuction.com

Tag 269 DJF K269

Act BW: **67 lbs.**
Adj WW: **671 lbs.**
Adj YW: **1316 lbs.**

ASA#4090320 BD: 2/19/22 Tattoo: K269
Homo Black Homo Polled 3/4 SM 1/4 AN Bull

ADG: **4.10**
WDA: **3.61**
Adj Scrotal: **39.7**
Frame Score: **6.0**

ACW IRONHIDE 395Y
TJ FROSTY 318E
TJ 58B
RBS BOISE B63

DJF G949

DJF B447

CE:	16	DOC:	14.3
BW:	-3.5	CW:	36.4
WW:	76	YG:	-0.32
YW:	109	Marb:	.04
ADG:	.21	BF:	-.068
MCE:	8	REA:	.83
Milk:	21	API:	128
MWW:	59	TI:	76
Stay:	16		

Potential heifer bull that had a maternal brother sell to Fischback Simmentals last year. Great carcass traits and a 4.10 ADG.

Tag 270 DJF K270

Act BW: **92 lbs.**
Adj WW: **758 lbs.**
Adj YW: **1395 lbs.**

ASA#4090321 BD: 2/19/22 Tattoo: K270
Homo Black Homo Polled 3/4 SM 1/4 AN Bull

ADG: **4.05**
WDA: **3.93**
Adj Scrotal: **40.2**
Frame Score: **7.0**

WS PROCLAMATION E202
LBR5 GENESIS G69
LBR DIANA D69
TJ MAKERS MARK 215Y

DJF F825

DOUBLE J MISS Y107

CE:	11	DOC:	14.1
BW:	.8	CW:	51.7
WW:	93	YG:	-.15
YW:	143	Marb:	.62
ADG:	.31	BF:	-.026
MCE:	7	REA:	.83
Milk:	22	API:	157
MWW:	69	TI:	95
Stay:	18		

Out of a larger framed cow family that has 11 EPD traits in the top 25%.

Tag 272 DJF K272

Act BW: **86 lbs.**
Adj WW: **770 lbs.**
Adj YW: **1459 lbs.**

ASA#4090323 BD: 2/19/22 Tattoo: K272
Homo Black Homo Polled 1/2 SM 1/2 AN Bull

ADG: **4.40**
WDA: **4.12**
Adj Scrotal: **40.7**
Frame Score: **7.0**

SYDGEN EXCEED 3223
SYDGEN ENHANCE
SYDGEN RITA 2618
WCS EL DORADO 5209C

DJF F8109

DJF C557

CE:	13	DOC:	13.9
BW:	-.2	CW:	54.5
WW:	87	YG:	-.15
YW:	145	Marb:	.51
ADG:	.37	BF:	-.038
MCE:	8	REA:	.76
Milk:	22	API:	146
MWW:	66	TI:	90
Stay:	13		

Growth oriented bull that has ADG in the top 3%, CW in the top 4%, and Marb in the top 20%!



TAG 272 – DJF K272

Tag 273 DJF K273

Act BW: **96 lbs.**
Adj WW: **858 lbs.**
Adj YW: **1446 lbs.**

ASA#4090324 BD: 2/19/22 Tattoo: K273
Homo Black Homo Polled Purebred SM Bull

ADG: **3.73**
WDA: **4.00**
Adj Scrotal: **37.7**
Frame Score: **6.0**

KOCH BIG TIMBER 685D
MR ISHEE TRIPLE TRAIL BLAZER
ISHEE MS EXCELLENCE 801
RBS BOISE B63

DJF G936

DJF D693

CE:	13	DOC:	12.0
BW:	.7	CW:	26.8
WW:	85	YG:	-.29
YW:	122	Marb:	.23
ADG:	.23	BF:	-.053
MCE:	8	REA:	.72
Milk:	26	API:	141
MWW:	68	TI:	85
Stay:	16		

This bull came in and posted the #2 WW of the natural born calves this year! Good CE and TI in the top 25%.



TAG 273 – DJF K273



TAG 279 - KRJ K279

Tag 279 KRJ K279

Act BW: 95 lbs.
Adj WW: 757 lbs.
Adj YW: 1375 lbs.

ASA#4090330 BD: 2/20/22 Tattoo: K279
Homo Black Baldy Homo Polled 3/4 SM 1/4 AN Bull

ADG: 3.92
WDA: 3.88
Adj Scrotal: 41.8
Frame Score: 6.5

WS PROCLAMATION E202
LBRS GENESIS G69
LBR DIANA D69
TJ MAKERS MARK 215Y

KRJ F881

DOUBLE J MISS Z228

CE:	8	DOC:	14.0
BW:	3.4	CW:	53.3
WW:	96	YG:	-16
YW:	149	Marb:	.58
ADG:	.33	BF:	-.029
MCE:	5	REA:	.84
Milk:	22	API:	146
MWW:	70	TI:	92
Stay:	17		

BWF bull that is following in the footsteps of his grandam, lot 54, with WW and YW in the top 5%!



TAG 282 - KRJ K282

Tag 282 KRJ K282

Act BW: 106 lbs.
Adj WW: 855 lbs.
Adj YW: 1532 lbs.

ASA#4090333 BD: 2/20/22 Tattoo: K282
Red Homo Polled Purebred SM Bull

ADG: 4.27
WDA: 4.32
Adj Scrotal: 42.8
Frame Score: 7.0

CDI HOMETOWN 246A
MFSR ROUNDUP 665H
MFSR BIG SKY 351C
WS ALL-AROUND Z35

OMF/DK DARLING D49

T60

CE:	6	DOC:	10.1
BW:	4.4	CW:	40.0
WW:	97	YG:	-.50
YW:	148	Marb:	-.28
ADG:	.32	BF:	-.097
MCE:	3	REA:	1.20
Milk:	33	API:	139
MWW:	81	TI:	91
Stay:	18		

Red herd sire prospect ranks in the top YW and WW, milk, and carcass EPD traits. Posts a 4.32 WDA and a natural calf out of the donor dam Darling, lot 10. His full ET brothers are 2156, 2160, and 2163.



TAG 283 - DJF K283

Tag 283 DJF K283

Act BW: 96 lbs.
Adj WW: 791 lbs.
Adj YW: 1425 lbs.

ASA#4090334 BD: 2/20/22 Tattoo: K283
Homo Black Homo Polled 3/4 SM 1/4 AN Bull

ADG: 4.03
WDA: 3.95
Adj Scrotal: 38.8
Frame Score: 6.2

ACW IRONHIDE 395Y
TJ FROSTY 318E
TJ 58B
CCR COWBOY CUT 5048Z

DJF G978

DJF A384

CE:	9	DOC:	15.7
BW:	2.2	CW:	39.8
WW:	94	YG:	-.23
YW:	133	Marb:	.23
ADG:	.25	BF:	-.055
MCE:	2	REA:	.68
Milk:	22	API:	126
MWW:	69	TI:	83
Stay:	17		

He traces back to one of my 1st Goldmine Donor cows that was high capacity and the easy fleshing type.

Tag 285 KRJ K285

Act BW: 102 lbs.
Adj WW: 849 lbs.
Adj YW: 1567 lbs.

ASA#4090336 BD: 2/20/22 Tattoo: K285
Homo Black Homo Polled 3/4 SM 1/4 AN Bull

ADG: 4.55
WDA: 4.44
Adj Scrotal: 42.8
Frame Score: 7.0

RUBYS TURNPIKE 771E
KRJ DAKOTA OUTLAW G974
BRKC DAPHNE DY37
CCR COWBOY CUT 5048Z

KRJ F8108

DOUBLE J MISS C5131

CE:	9	DOC:	13.4
BW:	3.5	CW:	36.4
WW:	97	YG:	-.40
YW:	149	Marb:	.24
ADG:	-.33	BF:	-.088
MCE:	3	REA:	.90
Milk:	25	API:	124
MWW:	74	TI:	86
Stay:	14		

This bull has been easy to find in the pasture or in the lot. This standout came in the #1 YW and #1 WDA of 4.44! His dam sells as lot 16 and grandam sells as lot 15.



TAG 285 – KRJ K285

Tag 286 DJF K286

Act BW: 91 lbs.
Adj WW: 692 lbs.
Adj YW: 1337 lbs.

ASA#4090337 BD: 2/21/22 Tattoo: K286
Homo Black Homo Polled Purebred SM Bull

ADG: 4.08
WDA: 3.79
Adj Scrotal: 37.9
Frame Score: 5.3

QB BLUEPRINT D47
GQ CONOCO F6
KRJ B478
CCR SANTA FE 9349Z

DJF E735

DJF C574

CE:	10	DOC:	8.9
BW:	.7	CW:	28.1
WW:	83	YG:	-.44
YW:	120	Marb:	-.05
ADG:	-.24	BF:	-.088
MCE:	8	REA:	.93
Milk:	17	API:	122
MWW:	58	TI:	77
Stay:	16		

Here is a bull that combines two of the best cow families of our operation, U828 Goldmine donor and R542, the mother of the prolific donor, T739.

DVAuction
Broadcasting Real-Time Auctions

Can't make the sale?
Let DVAuction bring the sale to you!
Busy during the sale?
Let DVAuction represent your bid!

VISIT WWW.DVAUCTION.COM
AND REGISTER TODAY.

For general questions please contact our office:
402-316-5460 or support@dvauction.com

CHECK OUT THE SALE VIDEOS HERE!
LOTS OF GROWTH SINCE PICTURE DAY!

Tag 287 DJF K287

Act BW: 83 lbs.
Adj WW: 756 lbs.
Adj YW: 1401 lbs.

ASA#4090338 BD: 2/21/22 Tattoo: K287
Homo Black Homo Polled Purebred SM Bull

ADG: 4.09
WDA: 3.91
Adj Scrotal: 39.4
Frame Score: 6.5

QB BLUEPRINT D47
GQ CONOCO F6
KRJ B478
CCR SANTA FE 9349Z

DJF F859

DJF D677

CE:	13	DOC:	8.9
BW:	-.6	CW:	30.0
WW:	87	YG:	-.45
YW:	126	Marb:	.03
ADG:	-.24	BF:	-.086
MCE:	9	REA:	.99
Milk:	20	API:	133
MWW:	64	TI:	84
Stay:	15		

A bull with a good spread form birth to yearling with his dam being our top WW heifer in 2018!



TAG 287 – DJF K287

Tag 289 KRJ K289

Act BW: 102 lbs. ASA#4090340 BD: 2/21/22 Tattoo: K289
 Adj WW: 829 lbs. *Homo Black Homo Polled 3/4 SM 1/4 AN Bull*
 Adj YW: 1529 lbs.

ADG: 4.44 RUBYS TURNPIKE 771E
 WDA: 4.37 KRJ DAKOTA OUTLAW G974
 Adj Scrotal: 39.9 BRKC DAPHNE DY37
 Frame Score: 7.0 S A V BISMARCK 5682

CE:	8	DOC:	11.7
BW:	3.4	CW:	38.0
WW:	94	YG:	-.45
YW:	147	Marb:	-.09
ADG:	.34	BF:	-.096
MCE:	5	REA:	1.01
Milk:	25	API:	117
MWW:	72	TI:	80
Stay:	16		

JBS MISS BISMARCK 119E
 JBS MISS PACE 839Y

Large framed bull that was the #2 WDA bull with great milk and carcass EPDs.

Tag 290 DJF K290

Act BW: 71 lbs. ASA#4090341 BD: 2/21/22 Tattoo: K290
 Adj WW: 720 lbs. *Homo Black Homo Polled Purebred SM Bull*
 Adj YW: 1230 lbs.

ADG: 3.23 CCR ANCHOR 9071B
 WDA: 3.26 W/C NIGHT WATCH 84E
 Adj Scrotal: 35.4 MISS WERNING KP 8543U
 Frame Score: 5.0 LCDR WITNESS 541C

CE:	13	DOC:	14.4
BW:	-8	CW:	29.2
WW:	83	YG:	-.40
YW:	119	Marb:	-.03
ADG:	.22	BF:	-.076
MCE:	7	REA:	.90
Milk:	24	API:	128
MWW:	66	TI:	80
Stay:	15		

DJF H099 DJF D6118
Potential heifer bull out of a 1st calf dam who had 109 YW ratio in 2020.

Tag 292 DJF K292

Act BW: 98 lbs. ASA#4090343 BD: 2/21/22 Tattoo: K292
 Adj WW: 813 lbs. *Homo Black Homo Polled 3/4 SM 1/4 AN Bull*
 Adj YW: 1326 lbs.

ADG: 3.25 WBF SIGNIFICANT B132
 WDA: 3.79 RUBYS TURNPIKE 771E
 Adj Scrotal: 36.9 RUBYS MISS CLEO 240Z
 Frame Score: 5.5 LRS RANGE BOSS 901Z

CE:	9	DOC:	10.8
BW:	4.1	CW:	52.6
WW:	105	YG:	-.36
YW:	168	Marb:	.07
ADG:	.40	BF:	-.082
MCE:	3	REA:	1.05
Milk:	23	API:	132
MWW:	75	TI:	90
Stay:	16		

DJF B413 DOUBLE J MISS Y112
Potential heifer bull out of a 1st calf dam who had 109 YW ratio in 2020.

Tag 299 DJF K299

Act BW: 86 lbs. ASA#4090350 BD: 2/22/22 Tattoo: K299
 Adj WW: 695 lbs. *Homo Black Homo Polled Purebred SM Bull*
 Adj YW: 1375 lbs.

ADG: 4.30 WBF SIGNIFICANT B132
 WDA: 3.90 RUBYS TURNPIKE 771E
 Adj Scrotal: 33.9 RUBYS MISS CLEO 240Z
 Frame Score: 5.8 J BAR J NIGHTRIDE 225Z

CE:	12	DOC:	11.6
BW:	-1	CW:	35.8
WW:	76	YG:	-.47
YW:	122	Marb:	.20
ADG:	.29	BF:	-.099
MCE:	4	REA:	1.02
Milk:	27	API:	142
MWW:	65	TI:	82
Stay:	17		

DJF E737 DJF C583
CE, milk, and carcass put into one package with a 4.3 ADG!

Tag 2101 KRJ K2101

Act BW: 86 lbs. ASA#4090352 BD: 2/23/22 Tattoo: K2101
 Adj WW: 706 lbs. *Homo Black Baldy Homo Polled 3/4 SM 1/4 AN Bull*
 Adj YW: 1236 lbs.
 ADG: 3.37
 WDA: 3.52
 Adj Scrotal: 37.5
 Frame Score: 5.8
Baldy bull with CE and MCE that goes back to one of my top Angus cows!

KOCH BIG TIMBER 685D
 MR ISHEE TRIPLE TRAIL BLAZER
 ISHEE MS EXCELLENCE 801
 CCR COWBOY CUT 5048Z
 KRJ F872
 DOUBLE J MISS X004

CE:	15	DOC:	13.0
BW:	-1.0	CW:	20.2
WW:	70	YG:	-.15
YW:	101	Marb:	.36
ADG:	.20	BF:	-.032
MCE:	10	REA:	.36
Milk:	23	API:	138
MWW:	58	TI:	76
Stay:	17		



TAG 2102 - KRJ K2102

Tag 2102 KRJ K2102

Act BW: 78 lbs. ASA#4090353 BD: 2/23/22 Tattoo: K2102
 Adj WW: 748 lbs. *Homo Black Homo Polled 3/4 SM 1/4 AN Bull*
 Adj YW: 1318 lbs.

ADG: 3.61 RUBYS TURNPIKE 771E
 WDA: 3.75 KRJ DAKOTA OUTLAW G974
 Adj Scrotal: 36.5 BRKC DAPHNE DY37
 Frame Score: 6.0 TNT TANKER U263

CE:	11	DOC:	12.9
BW:	-2	CW:	36.6
WW:	86	YG:	-.50
YW:	137	Marb:	.03
ADG:	.32	BF:	-.113
MCE:	6	REA:	1.03
Milk:	23	API:	133
MWW:	66	TI:	84
Stay:	16		

KRJ E713 DOUBLE J MISS Y111
He offers calving ease with good growth and impressive carcass data as YG, BF, and REA are all in the top 5%!

Tag 2106 DJF K2106

Act BW: 98 lbs. ASA#4090357 BD: 2/24/22 Tattoo: K2106
 Adj WW: 847 lbs. *Homo Black Homo Polled Purebred SM Bull*
 Adj YW: 1538 lbs.

ADG: 4.38
 WDA: 4.31
 Adj Scrotal: 40.5
 Frame Score: 7.0

WS PROCLAMATION E202
LBRS GENESIS G69
 LBR DIANA D69
 RBS BOISE B63

DJF F824
 DOUBLE J MISS Z285

CE:	8	DOC:	12.7
BW:	2.9	CW:	47.9
WW:	100	YG:	-.34
YW:	144	Marb:	.56
ADG:	-.28	BF:	-.062
MCE:	3	REA:	1.07
Milk:	26	API:	158
MWW:	75	TI:	99
Stay:	18		

Larger framed, performance oriented bull with solid numbers across the board as well as pushing the scales to our #6 WW ratio and #4 YW ratio as well as #4 WDA of 4.31!



TAG 2106 – DJF K2106

Tag 2110 KRJ K2110

Act BW: 102 lbs. ASA#4090361 BD: 2/26/22 Tattoo: K2110
 Adj WW: 856 lbs. *Red Homo Polled Purebred SM Bull*
 Adj YW: 1536 lbs.

ADG: 4.30
 WDA: 4.24
 Adj Scrotal: 40.1
 Frame Score: 7.0

CDI HOMETOWN 246A
MFSR ROUNDUP 665H
 MFSR BIG SKY 351C
 KWA LAW MAKER 59C

KRJ G960
 KS MS MADAGASCAR C525

CE:	4	DOC:	10.0
BW:	5.4	CW:	44.0
WW:	94	YG:	-.51
YW:	146	Marb:	.15
ADG:	-.33	BF:	-.103
MCE:	2	REA:	1.23
Milk:	36	API:	130
MWW:	82	TI:	84
Stay:	19		

Large framed red bull with 9 EPDs in the top 10% and excels in growth, maternal, and carcass traits!

Tag 2114 DJF K2114

Act BW: 96 lbs. ASA#4090365 BD: 2/27/22 Tattoo: K2114
 Adj WW: 749 lbs. *Homo Black Homo Polled Purebred SM Bull*
 Adj YW: 1352 lbs.

ADG: 3.80
 WDA: 3.85
 Adj Scrotal: 41.7
 Frame Score: 6.1

WBF SIGNIFICANT B132
RUBYS TURNPIKE 771E
 RUBYS MISS CLEO 240Z
 SS GOLDMINE L42

DJF A370
 DOUBLE J MISS Y170

CE:	6	DOC:	10.7
BW:	3.8	CW:	31.8
WW:	83	YG:	-.56
YW:	127	Marb:	-.01
ADG:	-.28	BF:	-.121
MCE:	1	REA:	1.10
Milk:	28	API:	117
MWW:	69	TI:	75
Stay:	17		

His dam, lot 51, traces back to the great Chiquita cow family has had 4 bulls in past sales with great growth and carcass traits!

Tag 2115 DJF K2115

Act BW: 86 lbs. ASA#4090366 BD: 3/2/22 Tattoo: K2115
 Adj WW: 816 lbs. *Homo Black Homo Polled 1/2 SM 1/2 AN Bull*
 Adj YW: 1485 lbs.

ADG: 4.27
 WDA: 4.07
 Adj Scrotal: 41.3
 Frame Score: 7.0

SYDGEN EXCEED 3223
SYDGEN ENHANCE
 SYDGEN RITA 2618
 CDI INNOVATOR 325D

DJF H061
 DJF D621

CE:	11	DOC:	12.1
BW:	.8	CW:	53.6
WW:	90	YG:	-.16
YW:	147	Marb:	.64
ADG:	-.36	BF:	-.034
MCE:	6	REA:	.81
Milk:	23	API:	142
MWW:	68	TI:	91
Stay:	13		

A bull with a bigger frame that has WW, YW, ADG, Marb, and TI in the top 10% and a 4.27 ADG! Great grandam sells as lot 53.

Tag 2117 KRJ K2117

Act BW: 77 lbs. ASA#4090367 BD: 3/3/22 Tattoo: K2117
 Adj WW: 787 lbs. *Hetero Black Homo Polled Purebred SM Bull*
 Adj YW: 1336 lbs.

ADG: 3.46
 WDA: 3.80
 Adj Scrotal: 38.9
 Frame Score: 6.4

MR ISHEE CATALYST
RBS BOISE B63
 RBS MISS S63
 GW REDESTINED 642X

KRJ B440
 DOUBLE J MISS U849

CE:	14	DOC:	11.1
BW:	-1.4	CW:	21.0
WW:	70	YG:	-.52
YW:	91	Marb:	.17
ADG:	-.13	BF:	-.098
MCE:	9	REA:	1.02
Milk:	26	API:	138
MWW:	62	TI:	78
Stay:	17		

Potential heifer bull that has maternal sibs at Cripple Creek Cattle Co., Kaelberer Ranch, and Larson's! Dam sells as lot 48.

Tag 2127 KRJ K2127

Act BW: 92 lbs. ASA#4090377 BD: 3/10/22 Tattoo: K2127
 Adj WW: 820 lbs. **Homo Black Homo Polled Purebred SM Bull**
 Adj YW: 1438 lbs.

ADG: 3.90 CCR WIDE RANGE 9005A
 WDA: 4.11 **BCLR CASH FLOW C820**
 Adj Scrotal: 39.3 BCLR MISS MONICA U820
 Frame Score: 7.0 LRS UNLIMITED 752A

CE:	13	DOC:	9.7
BW:	-2	CW:	35.6
WW:	84	YG:	-5.7
YW:	128	Marb:	.05
ADG:	.28	BF:	-.091
MCE:	6	REA:	1.39
Milk:	16	API:	145
MWW:	57	TI:	82
Stay:	21		

KRJ D632

DOUBLE J MISS Y172

Larger frame bull with YG in the top 2%, REA in the top 1%, and put up a 106 WW! His dam, lot 38, has had 5 calves averaging a 105 WW ratio.

Tag 2128 KRJ K2128

Act BW: 89 lbs. ASA#4090378 BD: 3/11/22 Tattoo: K2128
 Adj WW: 772 lbs. **Homo Black Homo Polled 1/2 SM 1/2 AN Bull**
 Adj YW: 1406 lbs.

ADG: 4.05 MR ISHEE CATALYST
 WDA: 4.07 **RBS BOISE B63**
 Adj Scrotal: 38.3 RBS MISS S63
 Frame Score: 6.5 R B TOUR OF DUTY 177

CE:	16	DOC:	11.1
BW:	-1.2	CW:	30.2
WW:	68	YG:	-.27
YW:	98	Marb:	.24
ADG:	.18	BF:	-.052
MCE:	12	REA:	.72
Milk:	27	API:	123
MWW:	61	TI:	74
Stay:	12		

DOUBLE J MISS D604

DOUBLE J MISS X004

CE, easy fleshing ability, and maternal traits in one great package backed by one of my top Angus cow families!

Tag 2131 DJF K2131

Act BW: 96 lbs. ASA#4090381 BD: 3/15/22 Tattoo: K2131
 Adj WW: 773 lbs. **Homo Black Homo Polled Purebred SM Bull**
 Adj YW: 1388 lbs.

ADG: 3.89 CCR WIDE RANGE 9005A
 WDA: 3.87 **BCLR CASH FLOW C820**
 Adj Scrotal: 39 BCLR MISS MONICA U820
 Frame Score: 6.6 RUBYS TURNPIKE 771E

CE:	11	DOC:	11.8
BW:	2.4	CW:	39.3
WW:	92	YG:	-5.8
YW:	144	Marb:	-.02
ADG:	.33	BF:	-.098
MCE:	5	REA:	1.42
Milk:	15	API:	133
MWW:	61	TI:	82
Stay:	19		

DJF G9167

DOUBLE J MISS T739

WW, YW, and ADG all rank in the top 10% while YG and REA are in the top 2%. This bull goes back to T739, one of the most prolific donors in the ASA!

Tag 2156 KRJ K2156

Act BW: ET ASA#4101552 BD: 2/20/22 Tattoo: K2156
 Adj WW: 764 lbs. **Red Homo Polled Purebred SM Bull**
 Adj YW: 1435 lbs.

ADG: 4.25 CDI HOMETOWN 246A
 WDA: 3.81 **MFSR ROUNDUP 665H**
 Adj Scrotal: 40.3 MFSR BIG SKY 351C
 Frame Score: 6.5 WS ALL-AROUND Z35

CE:	8	DOC:	9.7
BW:	3.1	CW:	36.7
WW:	92	YG:	-.50
YW:	140	Marb:	.28
ADG:	.30	BF:	-.097
MCE:	4	REA:	1.15
Milk:	33	API:	141
MWW:	78	TI:	89
Stay:	18		

OMF/DK DARLING D49

T60

Full brother to 282, 2160 and 2163 with well balanced EPDs and a 4.25 ADG!

Tag 2160 KRJ K2160

Act BW: ET ASA#4101555 BD: 2/22/22 Tattoo: K2160
 Adj WW: 768 lbs. **Red Homo Polled Purebred SM Bull**
 Adj YW: 1543 lbs.

ADG: 4.92 CDI HOMETOWN 246A
 WDA: 3.99 **MFSR ROUNDUP 665H**
 Adj Scrotal: 35.9 MFSR BIG SKY 351C
 Frame Score: 6.8 WS ALL-AROUND Z35

CE:	8	DOC:	9.7
BW:	3.1	CW:	36.7
WW:	92	YG:	-.50
YW:	140	Marb:	.28
ADG:	.30	BF:	-.097
MCE:	4	REA:	1.15
Milk:	33	API:	141
MWW:	78	TI:	89
Stay:	18		

OMF/DK DARLING D49

T60

A full brother to 282, 2156 and 2163 with a 4.92 ADG, tying his brother 2163.

Tag 2161 KRJ K2161

Act BW: ET ASA#4101556 BD: 2/22/22 Tattoo: K2161
 Adj WW: 762 lbs. **Homo Black Homo Polled Purebred SM Bull**
 Adj YW: 1513 lbs.

ADG: 4.77 RUBYS TURNPIKE 771E
 WDA: 3.96 **KRJ DAKOTA OUTLAW G974**
 Adj Scrotal: 37.4 BRKC DAPHNE DY37
 Frame Score: 6.8 MR NLC UPGRADE U8676

CE:	8	DOC:	12.3
BW:	2.7	CW:	30.9
WW:	89	YG:	-.51
YW:	136	Marb:	.16
ADG:	.30	BF:	-.123
MCE:	3	REA:	.90
Milk:	26	API:	131
MWW:	70	TI:	85
Stay:	16		

KRJ A3106

DOUBLE J MISS U8105

His dam has produced 6 bulls in past sales that went to the very top cattlemen with this one posting 1513 Adj YW and a 4.7 ADG! Full brother to 2165, 2169, and 2176.

Tag 2163 KRJ K2163

Act BW: ET ASA#4101558 BD: 2/23/22 Tattoo: K2163
 Adj WW: 836 lbs. **Red Homo Polled Purebred SM Bull**
 Adj YW: 1611 lbs.

ADG: 4.92 CDI HOMETOWN 246A
 WDA: 4.24 MFSR ROUNDUP 665H
 Adj Scrotal: 43 MFSR BIG SKY 351C
 Frame Score: 7.0 WS ALL-AROUND Z35
 OMF/DK DARLING D49
 T60

CE:	8	DOC:	9.7
BW:	3.1	CW:	36.7
WW:	92	YG:	-50
YW:	140	Marb:	-.28
ADG:	.30	BF:	-.097
MCE:	4	REA:	1.15
Milk:	33	API:	141
MWW:	78	TI:	89
Stay:	18		

Larger framed red bull with the highest YW among his full brothers, 282, 2156, 2160 as well as tying 2163 with a 4.92 ADG!

Tag 2165 KRJ K2165

Act BW: ET ASA#4101560 BD: 2/21/22 Tattoo: K2165
 Adj WW: 717 lbs. **Homo Black Homo Polled Purebred SM Bull**
 Adj YW: 1392 lbs.

ADG: 4.30 RUBYSTURNTURNPIKE 771E
 WDA: 3.67 KRJ DAKOTA OUTLAW G974
 Adj Scrotal: 37.4 BRKC DAPHNE DY37
 Frame Score: 6.7 MR NLC UPGRADE U8676
 KRJ A3106
 DOUBLE J MISS U8105

CE:	8	DOC:	12.3
BW:	2.7	CW:	30.9
WW:	89	YG:	-.51
YW:	136	Marb:	.16
ADG:	.30	BF:	-.123
MCE:	3	REA:	.90
Milk:	26	API:	131
MWW:	70	TI:	85
Stay:	16		

Growth, milk, and carcass from the great A3106 donor with a 4.3 ADG! Full brother to 2161, 2169, and 2176.

Tag 2167 DJF K2167

Act BW: ET ASA#4101562 BD: 3/1/22 Tattoo: K2167
 Adj WW: 697 lbs. **Homo Black Homo Polled Purebred SM Bull**
 Adj YW: 1508 lbs.

ADG: 5.14 MR CCF VISION
 WDA: 3.81 MR CCF 20-20
 Adj Scrotal: 38.3 HTP SVF DEW THE STROKE
 Frame Score: 5.6 TNT TANKER U263
 DJF A3118
 DOUBLE J MISS R542

CE:	9	DOC:	10.4
BW:	3.3	CW:	28.9
WW:	88	YG:	-.58
YW:	130	Marb:	-.15
ADG:	.27	BF:	-.106
MCE:	4	REA:	1.24
Milk:	17	API:	113
MWW:	61	TI:	74
Stay:	16		

Embryo transplant bull from the A3118 donor cow that has sold 3 sons to the Beitelspacher Ranch. This calf has taken off since weaning despite being on a poor recip and hit the scale with a 1508 Adj YW!

Tag 2169 KRJ K2169

Act BW: ET ASA#4101563 BD: 3/1/22 Tattoo: K2169
 Adj WW: 749 lbs. **Homo Black Homo Polled Purebred SM Bull**
 Adj YW: 1531 lbs.

ADG: 4.97 RUBYSTURNTURNPIKE 771E
 WDA: 3.98 KRJ DAKOTA OUTLAW G974
 Adj Scrotal: 37.8 BRKC DAPHNE DY37
 Frame Score: 6.6 MR NLC UPGRADE U8676
 KRJ A3106
 DOUBLE J MISS U8105

CE:	8	DOC:	12.3
BW:	2.7	CW:	30.9
WW:	89	YG:	-.51
YW:	136	Marb:	.16
ADG:	.30	BF:	-.123
MCE:	3	REA:	.90
Milk:	26	API:	131
MWW:	70	TI:	85
Stay:	16		

Highest adjusted yearling weight and ADG amongst his ET brothers 2161, 2165, and 2176.

Tag 2170 KRJ K2170

Act BW: ET ASA#4101564 BD: 3/1/22 Tattoo: K2170
 Adj WW: 799 lbs. **Hetero Black Homo Polled Purebred SM Bull**
 Adj YW: 1576 lbs.

ADG: 4.93 WBF SIGNIFICANT B132
 WDA: 4.14 RUBYS TURNPIKE 771E
 Adj Scrotal: 39.3 RUBYS MISS CLEO 240Z
 Frame Score: 6.6 LLSF UPRISING Z925
 BRKC DAPHNE DY37
 HSF/HS SCARLETT Y165

CE:	9	DOC:	10.7
BW:	3.1	CW:	32.5
WW:	89	YG:	-.56
YW:	142	Marb:	-.06
ADG:	.33	BF:	-.138
MCE:	4	REA:	.97
Milk:	25	API:	111
MWW:	69	TI:	79
Stay:	11		

A full brother to Dakota Outlaw and 2174. With 2170's 1576 lbs at Adj YW, he came in as our #3 bull for ADG at 4.93! Very complete, well-balanced bull!



TAG 2170 - KRJ K2170



TAG 2174 – KRJ K2174

Tag 2174 KRJ K2174

Act BW: ET
Adj WW: 839 lbs.
Adj YW: 1553 lbs.

ASA#4101568 BD: 3/2/22 Tattoo: K2174
Hetero Black Homo Polled Purebred SM Bull

ADG: 4.54
WDA: 4.19
Adj Scrotal: 41.3
Frame Score: 6.9

WBF SIGNIFICANT B132
RUBYS TURNPIKE 771E
RUBYS MISS CLEO 240Z
LLSF UPRISING Z925
BRKC DAPHNE DY37

CE:	9	DOC:	10.7
BW:	3.1	CW:	32.5
WW:	89	YG:	-.56
YW:	142	Marb:	-.06
ADG:	.33	BF:	-.138
MCE:	4	REA:	.97
Milk:	25	API:	111
MWW:	69	TI:	79
Stay:	11		

HSF/HS SCARLETT Y165

Very attractive upcoming herd sire posted a 830 Adj WW and 1553 Adj YW. Those that have seen him say he could be better than his full brother, Dakota Outlaw!

Tag 2176 KRJ K2176

Act BW: ET
Adj WW: 775 lbs.
Adj YW: 1479 lbs.

ASA#4101570 BD: 3/3/22 Tattoo: K2176
Homo Black Homo Polled Purebred SM Bull

ADG: 4.48
WDA: 3.96
Adj Scrotal: 38.4
Frame Score: 6.2

RUBYS TURNPIKE 771E
KRJ DAKOTA OUTLAW G974
BRKC DAPHNE DY37
MR NLC UPGRADE U8676

KRJ A3106

DOUBLE J MISS U8105

CE:	8	DOC:	12.3
BW:	2.7	CW:	30.9
WW:	89	YG:	-.51
YW:	136	Marb:	.16
ADG:	.30	BF:	-.123
MCE:	3	REA:	.90
Milk:	26	API:	131
MWW:	70	TI:	85
Stay:	16		

Great combination bull that had the highest Adj WW among his brothers 2161, 2165, 2169 as well as a 4.48 ADG!

Tag 2179 DJF K2179

Act BW: ET
Adj WW: 800 lbs.
Adj YW: 1511 lbs.

ASA#4101573 BD: 3/4/22 Tattoo: K2179
Hetero Black Homo Polled Purebred SM Bull

ADG: 4.51
WDA: 4.04
Adj Scrotal: 39
Frame Score: 7.0

WBF SIGNIFICANT B132
RUBYS TURNPIKE 771E
RUBYS MISS CLEO 240Z
CNS DREAM ON L186

DOUBLE J MISS T739

DOUBLE J MISS R542

CE:	10	DOC:	8.7
BW:	3.2	CW:	39.9
WW:	90	YG:	-.57
YW:	141	Marb:	-.13
ADG:	.32	BF:	-.122
MCE:	5	REA:	1.20
Milk:	29	API:	116
MWW:	74	TI:	78
Stay:	15		

Large framed embryo transplant bull out of one of the most prolific donors in the ASA for growth with 116 calves to date! Check out his maternal sisters selling as lots 11, 12, 13, and 14.

ANGUS BULLS



TAG 243 – KRJ K243

Tag 243 KRJ K243

Act BW: 80 lbs.
Adj WW: 790 lbs.
Adj YW: 1546 lbs.

ASA#4090295 BD: 2/15/22 Tattoo: K243
Black Homo Polled Purebred AN Bull

ADG: 4.80
WDA: 4.11
Adj Scrotal: 37.5
Frame Score: 6.4

CONNELLY PAYRAISE
CRAWFORD GUARANTEE 9137
CRAWFORD MS ARMORY D40
SYDGEN ENHANCE

DOUBLE J MISS H002

MPJ FOREVER LADY 809

CE:	15	DOC:	14.7
BW:	-.9	CW:	70.3
WW:	91	YG:	.15
YW:	159	Marb:	.71
ADG:	.43	BF:	-.034
MCE:	7	REA:	.60
Milk:	23	API:	141
MWW:	68	TI:	89
Stay:	11		

Potential heifer bull with impressive numbers across the board and a 4.80 ADG all coming from a first calf heifer!

KIPP JULSON || Cell 605-351-9088 || Sale Day Landline 605-594-2310
View our videos online early in the New Year at www.DVAuction.com

Tag 212 HOME TOWN K212

Act BW: 79 lbs.
Adj WW: 660 lbs.
Adj YW: 1361 lbs.

AAA#20449076 BD: 2/11/22 Tattoo: K212
Purebred Angus Bull

ADG: 4.28
WDA: 3.76
Adj Scrotal: 40.3
Frame Score: 5.9

G A R ASHLAND
G A R HOME TOWN
CHAIR ROCK SURE FIRE 6095
MOGCK FRONTMAN 1141
MOGCK RUTH 624
MOGCK RUTH 961

CED:	19	RE:	.78
BW:	-2.0	Fat:	-.004
WW:	60	\$M:	69
YW:	105	\$W:	65
CEM:	14	\$F:	89
Milk:	29	\$G:	69
MW:	63	\$B:	158
CW:	42	\$C:	274
Marb:	.92		

Potential heifer bull with 11 EPDs in the top 25%! Good footed, moderate frame. 19 CED, -2.0 BW, 158 \$B, 274 \$C.

Tag 227 HOME TOWN K227

Act BW: 73 lbs.
Adj WW: 700 lbs.
Adj YW: 1389 lbs.

AAA#20449077 BD: 2/14/22 Tattoo: K227
Purebred Angus Bull

ADG: 4.21
WDA: 3.75
Adj Scrotal: 38.5
Frame Score: 5.9

G A R ASHLAND
G A R HOME TOWN
CHAIR ROCK SURE FIRE 6095
K C F BENNETT FORTRESS
LONG U MEMORY 912
MEMORY 513 OF TRIPP

CED:	11	RE:	1.21
BW:	-3	Fat:	-.043
WW:	76	\$M:	63
YW:	134	\$W:	84
CEM:	8	\$F:	93
Milk:	37	\$G:	93
MW:	71	\$B:	186
CW:	60	\$C:	304
Marb:	1.23		

Potential heifer bull bringing a lot to the table with 18 EPDs in the top 25%! 11 CED, 1.23 Marb, 1.21 RE, 304 \$C, 186 \$B, 84 \$W.

Tag 230 HOME TOWN K230

Act BW: 95 lbs.
Adj WW: 633 lbs.
Adj YW: 1298 lbs.

AAA#20449075 BD: 2/14/22 Tattoo: K230
Purebred Angus Bull

ADG: 4.06
WDA: 3.57
Adj Scrotal: 37.5
Frame Score: 6.2

G A R ASHLAND
G A R HOME TOWN
CHAIR ROCK SURE FIRE 6095
HA PRIME CUT 4493
BROOKDALE MISS WIX 108
BROOKDALE MISS WIX 696

CED:	4	RE:	1.00
BW:	3.1	Fat:	-.030
WW:	66	\$M:	78
YW:	113	\$W:	64
CEM:	12	\$F:	109
Milk:	30	\$G:	74
MW:	53	\$B:	183
CW:	59	\$C:	315
Marb:	.91		

Cow bull here with 18 EPDs in the top 25%! Good footed bull with .91 Marb, 1.00 RE, 78 \$M, 315 \$C.



TAG 227 - LONG U HOME TOWN K227

Tag 2152 PRESIDENT K2152

Act BW: ET
Adj WW: 700 lbs.
Adj YW: 1373 lbs.

AAA#20466405 BD: 2/17/22 Tattoo: K2152
Purebred Angus Bull

ADG: 4.21
WDA: 3.52
Adj Scrotal: 35.6
Frame Score: 6

COLEMAN CHARLO 0256
S A V PRESIDENT 6847
S A V BLACKCAP MAY 4136
S A V RENOWN 3439
PAYNE ERICA 7010
S A V ERICA 0376

CED:	1	RE:	.85
BW:	3.5	Fat:	-.009
WW:	73	\$M:	59
YW:	130	\$W:	71
CEM:	2	\$F:	78
Milk:	36	\$G:	34
MW:	78	\$B:	112
CW:	48	\$C:	204
Marb:	.14		

Embryo transplant President son with good feet & great phenotype! 130 YW.

Tag 2154 PRESIDENT K2154

Act BW: ET
Adj WW: 691 lbs.
Adj YW: 1263 lbs.

AAA#20466406 BD: 2/17/22 Tattoo: K2154
Purebred Angus Bull

ADG: 3.58
WDA: 3.33
Adj Scrotal: 34.6
Frame Score: 5.5

COLEMAN CHARLO 0256
S A V PRESIDENT 6847
S A V BLACKCAP MAY 4136
S A V RENOWN 3439
PAYNE ERICA 7010
S A V ERICA 0376

CED:	11	RE:	.76
BW:	0.4	Fat:	-.001
WW:	66	\$M:	82
YW:	115	\$W:	67
CEM:	11	\$F:	55
Milk:	26	\$G:	39
MW:	54	\$B:	94
CW:	26	\$C:	204
Marb:	.28		

Potential heifer bull embryo transplant President son that is sound on his feet & legs. 82 \$M.



EVERYONE THAT PURCHASES FROM OUR 49TH ANNUAL SALE WILL BE ENTERED IN A DRAWING FOR THIS COOLER AT THE END OF THE SALE!



LOT 1 – BRKC DAPHNE DY37

KRJ DAKOTA OUTLAW
SON OF DY37



CATTLE *Visions*

Lot 1 BRKC DAPHNE DY37

Adj BW: 82 ET lbs.
Adj WW: 648 lbs.

ASA#3164255 BD: 2/28/16 Tattoo: DY37
Hetero Black Homo Polled Purebred SM Cow

HEADS UP 20X ET

LLSF UPRISING Z925

LLSF UNTOUCHABLE U925
STF DOMINANCE T171

HSF/HS SCARLETT Y165

HSF/HS SHEZA BEAUTY U823

A.I Sire (5-10-22): **Mr SR 71 Right Now E1538** Due: 2-17-23

Pasture Sire (5-14 to 7-1-22): **OMF/DK KRJ Jawbreaker 15J**

PLAN MATING EST EPD

CE:	BW:	WW:	YW:	ADG:	MCE:	MILK:	MWW:	STAY:
13	.2	87	133	.29	7	23	66	11
DOC:	CW:	YG:	MARB:	BF:	REA:	API:	TI:	
13.9	22.0	-.55	.05	-.13	.85	129	84	

CE:	9	DOC:	12.3
BW:	2.5	CW:	14.9
WW:	83	YG:	-.54
YW:	123	Marb:	-.08
ADG:	.25	BF:	-.149
MCE:	4	REA:	.60
Milk:	16	API:	97
MWW:	57	TI:	74
Stay:	6		

Daphne is the mother of Dakota Outlaw who was our high selling bull in 2020 for \$31,000 to Bietelspacher Ranch with many top seedstock producers utilizing him. Outlaw has sired a son for Bietelspacher's called Next Level that sold to Boyert-Core and Buck Creek Ranch. Jesse James, a full brother to Outlaw, sold last year to Heartland Simmentals for \$16,000. Daphne produces eye appeal, body depth, and maternal traits with fault free genetics for growth. She sells in her entirety along with the first 3 daughters ever offered as well as very impressive sons, K2170 and K2174. She has been flushed 6 times with a 13 egg average. This is an investment that is sure to generate income!



LBRS GENESIS G69
EMBRYO SIRE

Lot 1A EMBRYO PACKAGE

SELLING 3 IVF EMBRYOS BY LBRS GENESIS G69

PLAN MATING EST EPD

CE:	BW:	WW:	YW:	ADG:	MCE:	MILK:	MWW:	STAY:
9	2.75	100	150	.31	4	23	73	13
DOC:	CW:	YG:	MARB:	BF:	REA:	API:	TI:	
13.9	42.85	-.38	.47	-.09	.91	149	98	



W/C REVOLUTION 65G
EMBRYO SIRE

Lot 1B EMBRYO PACKAGE

SELLING 3 IVF EMBRYOS BY W/C REVOLUTION 65G

PLAN MATING EST EPD

CE:	BW:	WW:	YW:	ADG:	MCE:	MILK:	MWW:	STAY:
10	2.8	96	150	.33	6	25	73	10
DOC:	CW:	YG:	MARB:	BF:	REA:	API:	TI:	
11.55	35.15	-.45	-.03	-.13	.76	117	84	

Lot 2 KRJ J1170

Adj BW: 96 ET lbs.
Adj WW: 639 lbs.

ASA#3941102 BD: 3/2/21 Tattoo: J1170
Hetero Black Homo Polled Purebred SM Cow

WBF SIGNIFICANT B132

CE:	9	DOC:	10.7
BW:	3.1	CW:	32.5
WW:	89	YG:	-.56
YW:	142	Marb:	-.06
ADG:	.33	BF:	-.138
MCE:	4	REA:	.97
Milk:	25	API:	111
MWW:	69	TI:	79
Stay:	11		

RUBYS TURNPIKE 771E
RUBYS MISS CLEO 240Z
LLSF UPRISING Z925
BRKC DAPHNE DY37
HSF/HS SCARLETT Y165

A.I Sire (5-6-22): OMF Epic E27 Due: 2-15-23
Pasture Sire (5-10 to 7-1-22): R&R KRJ Golden Book H0135

PLAN MATING EST EPD

CE:	BW:	WW:	YW:	ADG:	MCE:	MILK:	MWW:	STAY:
12	1.0	93	143	.31	6	24	70	15
DOC:	CW:	YG:	MARB:	BF:	REA:	API:	TI:	
12.7	37.2	-.42	.09	-.10	.90	137	87	

Lot 3 KRJ J1167

Adj BW: 100 ET lbs.
Adj WW: 701 lbs.

ASA#3941100 BD: 3/2/21 Tattoo: J1167
Hetero Black Homo Polled Purebred SM Cow

WBF SIGNIFICANT B132

CE:	9	DOC:	10.7
BW:	3.1	CW:	32.5
WW:	89	YG:	-.56
YW:	142	Marb:	-.06
ADG:	.33	BF:	-.138
MCE:	4	REA:	.97
Milk:	25	API:	111
MWW:	69	TI:	79
Stay:	11		

RUBYS TURNPIKE 771E
RUBYS MISS CLEO 240Z
LLSF UPRISING Z925
BRKC DAPHNE DY37
HSF/HS SCARLETT Y165

Pasture Sire (5-10 to 7-1-22): R&R KRJ Golden Book H0135
Due: 3-18-23

PLAN MATING EST EPD

CE:	BW:	WW:	YW:	ADG:	MCE:	MILK:	MWW:	STAY:
14	.35	90	140	.32	8	27	72	16
DOC:	CW:	YG:	MARB:	BF:	REA:	API:	TI:	
12.25	33.15	-.49	.09	-.10	1.02	144	87	

LOTS 2-4 DAUGHTERS OF DAPHNE DY37 & RUBYS TURNPIKE 771!

Lot 4 KRJ J1152

Adj BW: 80 ET lbs.
Adj WW: 606 lbs.

ASA#3941097 BD: 2/21/21 Tattoo: J1152
Hetero Black Homo Polled Purebred SM Cow

WBF SIGNIFICANT B132

CE:	9	DOC:	10.7
BW:	3.1	CW:	32.5
WW:	89	YG:	-.56
YW:	142	Marb:	-.06
ADG:	.33	BF:	-.138
MCE:	4	REA:	.97
Milk:	25	API:	111
MWW:	69	TI:	79
Stay:	11		

RUBYS TURNPIKE 771E
RUBYS MISS CLEO 240Z
LLSF UPRISING Z925
BRKC DAPHNE DY37
HSF/HS SCARLETT Y165

A.I Sire (5-6-22): Mr SR 71 Right Now E1538
Pasture Sire (5-10 to 7-1-22):
R&R KRJ Golden Book H0135 Due: 3-7-23

PLAN MATING EST EPD

CE:	BW:	WW:	YW:	ADG:	MCE:	MILK:	MWW:	STAY:
14	.35	90	140	.32	8	27	72	16
DOC:	CW:	YG:	MARB:	BF:	REA:	API:	TI:	
12.25	33.15	-.49	.09	-.10	1.02	144	87	

RUBYS TURNPIKE – SIRE LOT 2, 3 & 4



Lot 5 NPC GLITZ AND GLAMOUR C519

Adj BW: 75 lbs.
Adj WW: N/A lbs.

ASA#2981743 BD: 2/15/15 Tattoo: C519
Homo Black Baldy Homo Polled Purebred SM Cow

HTP SVF IN DEW TIME

CE:	13	DOC:	7.7
BW:	.4	CW:	10.9
WW:	63	YG:	-.34
YW:	75	Marb:	-.13
ADG:	-.08	BF:	-.077
MCE:	5	REA:	.49
Milk:	23	API:	126
MWW:	54	TI:	69
Stay:	17		

WELSHS DEW IT RIGHT 067T
SVF/NJC SENERITA N29
MR HOC BROKER
JSMF/FVF FISTFUL OF GLITTER
FVF GLITTER IN THE AIR



C519 found herself at the backdrop multiple times in her show career. She was named Champion several times in 2016 as a heifer with her success continuing with a calf at side as she was crowned the National Purebred Cow Calf Pair in 2020. This beautiful baldy injects her progeny with the structural soundness, extra dimension, and muscle shape that seedstock producers are after. She has been flushed 2 times with an 8 egg average and very sticky results. Great opportunity here!

PLAN MATING EST EPD

CE:	BW:	WW:	YW:	ADG:	MCE:	MILK:	MWW:	STAY:
10	1.7	90	126	.23	5	26	71	18
DOC:	CW:	YG:	MARB:	BF:	REA:	API:	TI:	
11.45	40.35	-.28	.58	-.05	.85	163	95	



LOT 5 – NPC GLITZ AND GLAMOUR C519



Lot 5A EMBRYO PACKAGE

SELLING 3 IVF EMBRYOS BY MR SR 71 RIGHT NOW E1538

PLAN MATING EST EPD

CE:	BW:	WW:	YW:	ADG:	MCE:	MILK:	MWW:	STAY:
14	-.85	77	109	.20	8	26	64	17
DOC:	CW:	YG:	MARB:	BF:	REA:	API:	TI:	
11.55	19.75	-.45	.16	-.10	.78	143	82	



MR SR 71 RIGHT NOW E1538 EMBRYO SIRE



LOT 6 - KRJ HOT TAMALE F8157

Lot 6 KRJ HOT TAMALE F8157

Adj BW: 88 ET lbs.
Adj WW: 702 lbs.

ASA#3443600 BD: 3/6/18 Tattoo: F8157
Red Baldy Homo Polled Purebred SM Cow

CE:	9	DOC:	8.3
BW:	3.2	CW:	24.4
WW:	76	YG:	-.40
YW:	109	Marb:	.15
ADG:	-.20	BF:	-.097
MCE:	5	REA:	.69
Milk:	22	API:	117
MWW:	60	TI:	75
Stay:	13		

GWS EBONY'S TRADEMARK 6N

REMINGTON SECRET WEAPON 185
AUBREYS BLACKBLAZE II 5T
SVF/NJC BUILT RIGHT N48



OMF/DK KRJ JAWBREAKER

EKHCC RED JEWEL 760
EKHCC CROWN JEWEL 523

Pasture Sire (5-14 to 7-1-22): **OMF/DK KRJ Jawbreaker 15J** Due: 4-6-23

PLAN MATING EST EPD

CE:	BW:	WW:	YW:	ADG:	MCE:	MILK:	MWW:	STAY:
10	2.05	86	130	.28	5	23	66	14
DOC:	CW:	YG:	MARB:	BF:	REA:	API:	TI:	
14.75	36.5	-.45	.04	-.11	.93	127	81	

Here is a direct daughter of Secret Weapon and Red Jewel that is very striking when you lay your eyes on her. She was a many time breed champion and supreme winner as a calf and most recently crowned in the top 5 Purebred Cow Calf Pair at the 2022 National Simmental Show. Her daughters have been following in her footsteps with one being slapped Reserve Champion at the 2022 SD State Fair FFA show! F8157 has been flushed 3 times with a 12 egg average with recently selling some for over \$1,000. I expect her and her daughters to have an exciting future whether you are in the market for making herd bulls, show heifers, or selling embryos. You will not want to miss out!

Lot 6A EMBRYO PACKAGE

SELLING 3 IVF EMBRYOS BY ROCKIN H CAPTIVATE



PLAN MATING EST EPD

CE:	BW:	WW:	YW:	ADG:	MCE:	MILK:	MWW:	STAY:
11	2.45	88	127	.25	6	27	71	15
DOC:	CW:	YG:	MARB:	BF:	REA:	API:	TI:	
12.75	22.90	-.46	.12	-.10	.86	131	83	

Lot 6B EMBRYO PACKAGE

SELLING 3 IVF EMBRYOS BY NEXT LEVEL



PLAN MATING EST EPD

CE:	BW:	WW:	YW:	ADG:	MCE:	MILK:	MWW:	STAY:
8	3.15	82	121	.25	3	23	64	13
DOC:	CW:	YG:	MARB:	BF:	REA:	API:	TI:	
9.3	28.0	-.47	.10	-.11	.88	119	78	



LOT 7 - DPS MISS NIBS J1195

Lot 7 MISS NIBS J1195

Adj BW: 90 ET lbs.
Adj WW: 705 lbs.

ASA#3955806 BD: 3/21/21 Tattoo: J1195
Red Baldy Hetero Polled Purebred SM Cow

CE:	10	DOC:	9.3
BW:	2.2	CW:	23.1
WW:	74	YG:	-.50
YW:	103	Marb:	.16
ADG:	-.18	BF:	-.106
MCE:	5	REA:	.91
Milk:	27	API:	121
MWW:	64	TI:	76
Stay:	14		

W/C LOADED UP 1119Y

W/C FULLY LOADED 90D
MISS WERNING KP 8543U
REMINGTON SECRET WEAPON 185

KRJ HOT TAMALE F8157
EKHCC RED JEWEL 760

A.I Sire (5-6-22): **Bar CK Red Empire 9153G** Due: 2-15-23
Pasture Sire (5-10 to 7-1-22): **R&R KRJ Golden Book H0135**

PLAN MATING EST EPD

CE:	BW:	WW:	YW:	ADG:	MCE:	MILK:	MWW:	STAY:
14	-.65	71	102	.19	8	27	62	18
DOC:	CW:	YG:	MARB:	BF:	REA:	API:	TI:	
12.8	16.7	-.46	.37	-.08	.95	154	83	

Lot 8 MISS STARBURST J1197

Adj BW: 96 ET lbs.
Adj WW: 659 lbs.

ASA#3955807 BD: 4/23/21 Tattoo: J1197
Red Baldy Homo Polled Purebred SM Cow

W/C LOADED UP 1119Y

W/C FULLY LOADED 90D
MISS WERNING KP 8543U
REMINGTON SECRET WEAPON 185

KRJ HOT TAMALE F8157
EKHCC RED JEWEL 760

Pasture Sire (5-10 to 7-1-22):
R&R KRJ Golden Book H0135 Due: 4-8-23

PLAN MATING EST EPD

CE:	BW:	WW:	YW:	ADG:	MCE:	MILK:	MWW:	STAY:
14	-.1	82	120	.24	8	28	69	18
DOC:	CW:	YG:	MARB:	BF:	REA:	API:	TI:	
11.55	28.45	-.46	.20	-.09	.99	149	85	

CE:	10	DOC:	9.3
BW:	2.2	CW:	23.1
WW:	74	YG:	-.50
YW:	103	Marb:	.16
ADG:	-.18	BF:	-.106
MCE:	5	REA:	.91
Milk:	27	API:	121
MWW:	64	TI:	76
Stay:	14		

Lot 9 KRJ J1153

Adj BW: 82 ET lbs.
Adj WW: 697 lbs.

ASA#3941098 BD: 2/21/21 Tattoo: J1153
Red Homo Polled 1/2 SM 1/2 AR Cow

RED COMPASS MULBERRY 449M

RED FINE LINE MULBERRY 26P
RED DUS FAYETTE 8G
SVF/NJC BUILT RIGHT N48

EKHCC RED JEWEL 760
EKHCC CROWN JEWEL 523

Pasture Sire (5-10 to 7-1-22):
R&R KRJ Golden Book H0135 Due: 3-25-23

PLAN MATING EST EPD

CE:	BW:	WW:	YW:	ADG:	MCE:	MILK:	MWW:	STAY:
13	.15	81	126	.28	9	26	66	19
DOC:	CW:	YG:	MARB:	BF:	REA:	API:	TI:	
11.4	31.7	-.28	.16	-.05	.75	136	78	



RED JEWEL

CE:	8	DOC:	9.0
BW:	2.7	CW:	29.6
WW:	73	YG:	-.15
YW:	114	Marb:	-.08
ADG:	-.25	BF:	-.038
MCE:	6	REA:	.43
Milk:	22	API:	106
MWW:	59	TI:	66
Stay:	15		

Lot 10 OMF/DK DARLING D49

Adj BW: 90 ET lbs.
Adj WW: 683 lbs.

ASA#3163085 BD: 2/19/16 Tattoo: D49
Red Homo Polled Purebred SM Cow

CE:	13	DOC:	12.1
BW:	.6	CW:	36.9
WW:	85	YG:	-.39
YW:	132	Marb:	.37
ADG:	.29	BF:	-.090
MCE:	6	REA:	.88
Milk:	28	API:	156
MWW:	70	TI:	91
Stay:	18		

WS BEEF KING W107
WS ALL-AROUND Z35
CDI MS HIGH ROLLER 39W
HOOKS PHAROAH 16P



KRJ DIRECT IMPACT SON

T60
TNT MISS FINESSE K66

A.I Sire (5-10-22): **Rockin H Captivate J75** Due: 2-17-23
Pasture Sire (5-14 to 7-1-22): **OMF/DK KRJ Jawbreaker 15J**

PLAN MATING EST EPD

CE:	BW:	WW:	YW:	ADG:	MCE:	MILK:	MWW:	STAY:
13	1.2	93	140	.29	7	30	77	18
DOC:	CW:	YG:	MARB:	BF:	REA:	API:	TI:	
14.6	29.15	-.46	.23	-.09	.96	151	92	



LOT 10 – OMF/DK DARLING D49

Darling came into our donor pen after producing KRJ Direct Impact selling to Dakota Express and her next bull selling as a herd sire to Lehrman Family Simmentals. Direct Impact calves have been well accepted in the seed stock industry topping a couple sales across the country. Darling's Round Up bulls in the sale are a very impressive set of red embryo transplants that we have raised. She has been flushed 5 times with a 22 egg average at Trans Ova! The success of this cow family has just begun!

Lot 11 DJF J1177

Adj BW: 85 ET lbs.
Adj WW: 640 lbs.

ASA#3941104 BD: 3/4/21 Tattoo: J1177
Hetero Black Homo Polled Purebred SM Cow

CE:	8	DOC:	10.2
BW:	3.7	CW:	34.4
WW:	95	YG:	-.62
YW:	146	Marb:	-.12
ADG:	.32	BF:	-.141
MCE:	4	REA:	1.16
Milk:	25	API:	112
MWW:	73	TI:	81
Stay:	13		

RUBYS TURNPIKE 771E
KRJ DAKOTA OUTLAW G974
BRKC DAPHNE DY37
CNS DREAM ON L186
DOUBLE J MISS T739
DOUBLE J MISS R542

Pasture Sire (5-10 to 7-1-22): **R&R KRJ Golden Book H0135**
Due: 3-22-23

PLAN MATING EST EPD

CE:	BW:	WW:	YW:	ADG:	MCE:	MILK:	MWW:	STAY:
14	.65	93	142	.31	8	27	73	17
DOC:	CW:	YG:	MARB:	BF:	REA:	API:	TI:	
12.0	34.1	-.52	.06	-.10	1.11	144	88	



LOT 11 – DJF J1177

LOTS 11-14: These bred heifers are the last of the legendary T739 donor who was recognized as one of the most prolific donors by the ASA. T739 has topped the sale here for many years and was known for her unmatched growth. Full sibs to Lot 12 have topped previous sales as bulls and bred heifers. Bred up to our Golden Book herd sire who has 12 EPDs in the top 15% and 7 in the top 5%. These females and matings are stacked with great genetics!



DOUBLE J MISS T739 – DAM OF LOTS 11-14

Lot 12 DJF J1151

Adj BW: 85 ET lbs.
Adj WW: 675 lbs.

ASA#3941096 BD: 2/21/21 Tattoo: J1151
Hetero Black Homo Polled 1/2 SM 1/2 AN Cow

CE:	13	DOC:	12.1
BW:	.4	CW:	47.5
WW:	86	YG:	-.20
YW:	140	Marb:	.41
ADG:	.34	BF:	-.046
MCE:	7	REA:	.77
Milk:	23	API:	137
MWW:	66	TI:	87
Stay:	13		

SYDGEN EXCEED 3223
SYDGEN ENHANCE
SYDGEN RITA 2618
CNS DREAM ON L186
DOUBLE J MISS T739
DOUBLE J MISS R542

A.I Sire (5-6-22): **Mr SR 71 Right Now E1538**
Pasture Sire (5-10 to 7-1-22): **R&R KRJ Golden Book H0135**
Due: 3-7-23

PLAN MATING EST EPD

CE:	BW:	WW:	YW:	ADG:	MCE:	MILK:	MWW:	STAY:
16	-1.0	88	139	.32	9	26	70	17
DOC:	CW:	YG:	MARB:	BF:	REA:	API:	TI:	
12.95	40.65	-.31	.33	-.06	.92	152	89	



LOT 12 – DJF J1151

Lot 13 DJF J1165

Adj BW: 108 ET lbs.
Adj WW: 571 lbs.

ASA#3941099 BD: 2/26/21 Tattoo: J1165
Homo Black Homo Polled Purebred SM Cow

CDI INNOVATOR 325D

LCDR/KRJ INVENTION 138G
CDI MS ENDEAVOR 142A
CNS DREAM ON L186

DOUBLE J MISS T739
DOUBLE J MISS R542

Pasture Sire (5-10 to 7-1-22): **R&R KRJ Golden Book H0135**
Due: 3-20-23

CE:	14	DOC:	9.6
BW:	1.2	CW:	35.1
WW:	86	YG:	-.50
YW:	128	Marb:	.00
ADG:	.27	BF:	-.102
MCE:	8	REA:	1.09
Milk:	27	API:	125
MWW:	70	TI:	81
Stay:	13		

PLAN MATING EST EPD

CE:	BW:	WW:	YW:	ADG:	MCE:	MILK:	MWW:	STAY:
16	-.6	88	133	.29	10	28	72	18
DOC:	CW:	YG:	MARB:	BF:	REA:	API:	TI:	
11.7	34.45	-.46	.12	-.08	1.08	151	88	

Lot 14 DJF J1168

Adj BW: 106 ET lbs.
Adj WW: 660 lbs.

ASA#3941101 BD: 3/2/21 Tattoo: J1168
Hetero Black Homo Polled Purebred SM Cow

CDI INNOVATOR 325D

LCDR/KRJ INVENTION 138G
CDI MS ENDEAVOR 142A
CNS DREAM ON L186

DOUBLE J MISS T739
DOUBLE J MISS R542

Pasture Sire (5-10 to 7-1-22): **R&R KRJ Golden Book H0135**
Due: 3-18-23

CE:	14	DOC:	9.6
BW:	1.2	CW:	35.1
WW:	86	YG:	-.50
YW:	128	Marb:	.00
ADG:	.27	BF:	-.102
MCE:	8	REA:	1.09
Milk:	27	API:	125
MWW:	70	TI:	81
Stay:	13		

PLAN MATING EST EPD

CE:	BW:	WW:	YW:	ADG:	MCE:	MILK:	MWW:	STAY:
16	-.6	88	133	.29	10	28	72	18
DOC:	CW:	YG:	MARB:	BF:	REA:	API:	TI:	
11.7	34.45	-.46	.12	-.08	1.08	151	88	

FULL SISTERS!

Lot 15 DOUBLE J MISS C5131

Adj BW: 81 lbs.
Adj WW: 585 lbs.

ASA#3345035 BD: 2/28/15 Tattoo: C5131
AAA#18240347

Homo Black Homo Polled Purebred AN Cow

MOHNEN BRUSHPOPPER 295

MOHNEN LONG DISTANCE 1639
BALDRIDGE BLACKBIRD M565
S A V BRILLIANCE 8077

DOUBLE J MISS Y1106
DOUBLE J MISS T7103

A.I Sire (5-10-22): **LLSF Pays To Believe ZU194** Due: 2-17-23
Pasture Sire (5-14 to 7-1-22): **OMF/DK KRJ Jawbreaker 15J**

CE:	18	DOC:	12.0
BW:	-3.7	CW:	27.6
WW:	54	YG:	.12
YW:	86	Marb:	.58
ADG:	.20	BF:	.034
MCE:	5	REA:	.13
Milk:	24	API:	126
MWW:	51	TI:	66
Stay:	12		

PLAN MATING EST EPD

CE:	BW:	WW:	YW:	ADG:	MCE:	MILK:	MWW:	STAY:
14	-.45	66	100	.22	6	23	56	10
DOC:	CW:	YG:	MARB:	BF:	REA:	API:	TI:	
12.0	29.75	-.11	.42	-.01	.51	127	75	



LOT 15 - DOUBLE J MISS C5131

This mother daughter combo gets my heart pumping with their breeding potential like no other! With Lot 15 being dual registered as an angus and bred to Pays to Believe, the calf in her belly is highly anticipated. If Lot 16 wasn't in the sale, she was be the next candidate to enter into our donor pen as her Outlaw bull, K285, this year came in as our top YW bull. She has also posted a 106 WW ratio on 3 calves and a 105 YW ratio on 2. It will be fun to see what these two produce in years to come!

Lot 16 KRJ F8108

Adj BW: 79 lbs.
Adj WW: 593 lbs.

ASA#3468487 BD: 2/24/18 Tattoo: F8108
Homo Black Homo Polled 1/2 SM 1/2 AN Cow

TRIPLE C SINGLETARY S3H

CCR COWBOY CUT 5048Z
CCR MS 4045 TIME 7322T
MOHNEN LONG DISTANCE 1639

DOUBLE J MISS C5131
DOUBLE J MISS Y1106

Pasture Sire (5-14 to 7-1-22): **KRJ Grade 8 Bolt J153**
Due: 3-6-23

CE:	15	DOC:	14.8
BW:	-.2	CW:	29.5
WW:	78	YG:	-.10
YW:	113	Marb:	.50
ADG:	.22	BF:	-.012
MCE:	7	REA:	.49
Milk:	26	API:	147
MWW:	65	TI:	84
Stay:	17		

PLAN MATING EST EPD

CE:	BW:	WW:	YW:	ADG:	MCE:	MILK:	MWW:	STAY:
12	1.45	89	132	.27	4	23	67	16
DOC:	CW:	YG:	MARB:	BF:	REA:	API:	TI:	
15.2	39.65	-.15	.34	-.03	.65	137	84	



LOT 16 - KRJ F8108

KIPP JULSON || Cell 605-351-9088 || Sale Day Landline 605-594-2310
View our videos online early in the New Year at www.DVAuction.com

Lot 17 DOUBLE J MISS E787

ASA#3653945 BD: 2/22/17 Tattoo: E787
Homo Black Homo Polled Purebred AN Cow

Adj BW: 78 lbs.
 Adj WW: 545 lbs.

V A R RESERVE 1111 B/R NEW DAY 454
 SANDPOINT BLACKBIRD 8809
 DOUBLE J MISS C5114 MOHNNEN LONG DISTANCE 1639
 DOUBLE J MISS T7107

CE:	12	DOC:	12.4
BW:	-3	CW:	29.4
WW:	64	YG:	.01
YW:	104	Marb:	.67
ADG:	.25	BF:	.015
MCE:	2	REA:	.36
Milk:	22	API:	119
MWW:	54	Ti:	70
Stay:	10		

Dual registered angus cow that has sold 2 bulls in past sales with 105 YW ratio. AAA# 18905885

Pasture Sire (5-14 to 7-1-22): **OMF/DK KRJ Jawbreaker 15J**
 Due: 3-31-23

PLAN MATING EST EPD

CE:	BW:	WW:	YW:	ADG:	MCE:	MILK:	MWW:	STAY:
12	.3	80	128	.30	4	23	63	13
DOC:	CW:	YG:	MARB:	BF:	REA:	API:	Ti:	
16.8	39.0	-.25	.30	-.05	.77	131	81	

Lot 18 KRJ J115

ASA#3929040 BD: 2/9/21 Tattoo: J115
Homo Black Baldy Homo Polled 3/4 SM 1/4 AN Cow

Adj BW: 54 Twin lbs.
 Adj WW: 533 lbs.

ACW IRONHIDE 395Y

TJ FROSTY 318E

TJ 58B
 BCLR CASH FLOW C820

KRJ G930

DOUBLE J MISS Z257

A.I Sire (5-6-22): **TJ Arrowhead 263G** Due: 2-15-23
 Pasture Sire (5-10 to 7-1-22): **R&R KRJ Golden Book H0135**

CE:	12	DOC:	15.2
BW:	.1	CW:	44.9
WW:	96	YG:	-.32
YW:	141	Marb:	.14
ADG:	.28	BF:	-.059
MCE:	3	REA:	.98
Milk:	16	API:	130
MWW:	64	Ti:	85
Stay:	16		

PLAN MATING EST EPD

CE:	BW:	WW:	YW:	ADG:	MCE:	MILK:	MWW:	STAY:
16	-2.45	93	142	.31	7	25	72	14
DOC:	CW:	YG:	MARB:	BF:	REA:	API:	Ti:	
13.9	49.05	-.28	.29	-.05	.95	146	92	



LOT 18 - KRJ J115

LOTS 18-20 DAUGHTERS OF HERD SIRE TJ FROSTY 318E!

These Frosty daughters are your moderate framed, high capacity, easy fleshing type! Lot 20 is a maternal sib to K273 bull.



TJ FROSTY 318E
 SIRE LOTS 18-20

Lot 19 KRJ J117

ASA#3929041 BD: 2/9/21 Tattoo: J117
Homo Black Baldy Homo Polled 3/4 SM 1/4 AN Cow

Adj BW: 67 lbs.
 Adj WW: 624 lbs.

ACW IRONHIDE 395Y

TJ FROSTY 318E

TJ 58B
 HOOK'S BLACK HAWK 50B

KRJ G9118

KRJ E7118

A.I Sire (5-6-22): **TJ Arrowhead 263G**
 Pasture Sire (5-10 to 7-1-22): **R&R KRJ Golden Book H0135**
 Due: 3-7-23

CE:	14	DOC:	14.9
BW:	-3.6	CW:	42.9
WW:	84	YG:	-.26
YW:	122	Marb:	.21
ADG:	.24	BF:	-.045
MCE:	3	REA:	.90
Milk:	22	API:	139
MWW:	64	Ti:	85
Stay:	17		

PLAN MATING EST EPD

CE:	BW:	WW:	YW:	ADG:	MCE:	MILK:	MWW:	STAY:
16	-3.0	87	130	.27	7	25	69	19
DOC:	CW:	YG:	MARB:	BF:	REA:	API:	Ti:	
14.35	38.35	-.34	.23	-.06	.98	164	92	

Lot 20 DJF J127

ASA#3929050 BD: 2/12/21 Tattoo: J127
Homo Black Homo Polled 5/8 SM 3/8 AN Cow

Adj BW: 81 lbs.
 Adj WW: 670 lbs.

ACW IRONHIDE 395Y

TJ FROSTY 318E

TJ 58B
 RBS BOISE B63

DJF G936

DJF D693

A.I Sire (5-6-22): **OMF Epic E27** Due: 2-15-23
 Pasture Sire (5-10 to 7-1-22): **R&R KRJ Golden Book H0135**

CE:	14	DOC:	14.8
BW:	-9	CW:	40.2
WW:	88	YG:	-.24
YW:	126	Marb:	.17
ADG:	.24	BF:	-.049
MCE:	6	REA:	.78
Milk:	25	API:	128
MWW:	69	Ti:	83
Stay:	14		

PLAN MATING EST EPD

CE:	BW:	WW:	YW:	ADG:	MCE:	MILK:	MWW:	STAY:
15	-1.0	92	135	.27	7	24	70	16
DOC:	CW:	YG:	MARB:	BF:	REA:	API:	Ti:	
14.75	41.05	-.26	.20	-.05	.81	140	86	

Lot 21 DJF J188

ASA#3929109 BD: 2/21/21 Tattoo: J188
Homo Black Homo Polled Purebred SM Cow

Adj BW: 95 lbs.
 Adj WW: 656 lbs.

WCS EL DORADO 5209C LRS TURNING POINT 3117A
 KS SIERRA R992
 DJF D677 DJF WRANGLER B445
 DJF A3127

CE:	11	DOC:	12.2
BW:	2.0	CW:	38.1
WW:	86	YG:	-.55
YW:	129	Marb:	-.06
ADG:	.27	BF:	-.114
MCE:	7	REA:	1.19
Milk:	31	API:	117
MWW:	73	Ti:	79
Stay:	13		

High volumed and heavy muscled heifer with growth, milk, and carcass! Dam sells as lot 35.

Pasture Sire (5-10 to 7-1-22): **R&R KRJ Golden Book H0135**
 Due: 3-31-23

PLAN MATING EST EPD

CE:	BW:	WW:	YW:	ADG:	MCE:	MILK:	MWW:	STAY:
15	-.2	88	133	.29	9	30	74	17
DOC:	CW:	YG:	MARB:	BF:	REA:	API:	Ti:	
13.0	35.95	-.48	.09	-.09	1.13	147	87	

Lot 22 DJF J190

Adj BW: 88 lbs.
Adj WW: 574 lbs.

ASA#3929111 BD: 2/21/21 Tattoo: J190
Homo Black Homo Polled Purebred SM Cow

MR ISHEE CATALYST

RBS BOISE B63

RBS MISS S63
WLE UNO MAS X549

DJF F893

DJF D6116

These Boise heifers have a great maternal pedigree with good carcass traits!

Pasture Sire (5-10 to 7-1-22): **R&R KRJ Golden Book H0135**
Due: 3-22-23

PLAN MATING EST EPD

CE:	BW:	WW:	YW:	ADG:	MCE:	MILK:	MWW:	STAY:
13	-1.1	69	94	.15	9	22	57	15
DOC:	CW:	YG:	MARB:	BF:	REA:	API:	TI:	
10.6	14.8	-0.55	0.08	-1.10	0.94	127	74	

Lot 23 DJF J1112

Adj BW: 72 lbs.
Adj WW: 541 lbs.

ASA#3929130 BD: 2/26/21 Tattoo: J1112
Homo Black Homo Polled 3/4 SM 1/4 AN Cow

MR ISHEE CATALYST

RBS BOISE B63

RBS MISS S63
TJ MAKERS MARK 215Y

DJF F825

DOUBLE J MISSY107

Pasture Sire (5-10 to 7-1-22): **R&R KRJ Golden Book H0135**
Due: 3-24-23

PLAN MATING EST EPD

CE:	BW:	WW:	YW:	ADG:	MCE:	MILK:	MWW:	STAY:
17	-2.2	67	95	.18	11	21	54	15
DOC:	CW:	YG:	MARB:	BF:	REA:	API:	TI:	
11.4	24.1	-0.35	0.11	-0.65	0.79	124	71	

LOTS 22 & 23 DAUGHTERS OF RBS BOISE B63!



LOT 24 - DJF H070

BCLR CASH FLOW
PASTURE SIRE LOTS 24-29



Lot 24 DJF H070

Adj BW: 77 lbs.
Adj WW: 578 lbs.

ASA#3786472 BD: 2/19/20 Tattoo: H070
Homo Black Homo Polled 5/8 SM 3/8 AN Cow

S A V BISMARCK 5682

TJ MAKERS MARK 215Y

TJ JEZEBEL 53J
J BAR J NIGHTRIDE 225Z

DJF E737

DJF C583

Great pedigree backed to a Dew it Right! Her grandam sells as lot 43.

Pasture Sire (5-14 to 7-1-22): **BCLR Cash Flow C820**
Due: 3-20-23

PLAN MATING EST EPD

CE:	BW:	WW:	YW:	ADG:	MCE:	MILK:	MWW:	STAY:
12	0	80	124	.27	6	17	57	16
DOC:	CW:	YG:	MARB:	BF:	REA:	API:	TI:	
14.1	42.3	-0.21	0.29	-0.45	0.74	133	80	

Lot 25 DJF H065

Adj BW: 83 lbs.
Adj WW: 566 lbs.

ASA#3786467 BD: 2/18/20 Tattoo: H065
Homo Black Homo Polled Purebred SM Cow

TJ MAIN EVENT 503B

CDI INNOVATOR 325D

CDI MS SHEAR FORCE 49U
RBS BERETTA A50

DJF D6134

DOULBE J MISS W980

The Innovator x Cash Flow cross has worked really well here!

Pasture Sire (5-14 to 7-1-22): **BCLR Cash Flow C820**
Due: 3-26-23

PLAN MATING EST EPD

CE:	BW:	WW:	YW:	ADG:	MCE:	MILK:	MWW:	STAY:
11	1.5	82	121	.24	6	24	65	14
DOC:	CW:	YG:	MARB:	BF:	REA:	API:	TI:	
10.3	32.9	-0.43	0.18	-0.93	0.92	130	82	

Lot 26 KRJ H053

Adj BW: 65 lbs.
Adj WW: 624 lbs.

ASA#3786455 BD: 2/17/20 Tattoo: H053
Homo Black Homo Polled Purebred SM Cow

LRS TURNING POINT 3117A

WCS EL DORADO 5209C

KS SIERRA R992
LRS UNLIMITED 752A

KRJ D632

DOUBLE J MISSY172

Produced a top WW heifer this year with a 116 ratio.

Pasture Sire (5-14 to 7-1-22): **BCLR Cash Flow C820**
Due: 3-28-23

PLAN MATING EST EPD

CE:	BW:	WW:	YW:	ADG:	MCE:	MILK:	MWW:	STAY:
14	-1.3	77	118	.26	9	32	70	15
DOC:	CW:	YG:	MARB:	BF:	REA:	API:	TI:	
8.6	41.8	-0.55	-0.09	-1.13	1.25	126	77	

Lot 27 DJF G952

Adj BW: 92 lbs.
Adj WW: 623 lbs.

ASA#3632479 BD: 2/21/19 Tattoo: G952
Homo Black Homo Polled Purebred SM Cow

BDV TRUE GRIT 11X

BBS TRUE JUSTICE B10

BBS MISS JUSTICE Z7
GW-WBF SUBSTANCE 820Y

DJF C557

DOUBLE J MISS Y182

She had a bull sell to Rhinehart Simmentals last year for \$9,500! She also posted a 108 WW ratio on 2 calves

Pasture Sire (5-14 to 7-1-22): **BCLR Cash Flow C820**
Due: 3-29-23

PLAN MATING EST EPD

CE:	BW:	WW:	YW:	ADG:	MCE:	MILK:	MWW:	STAY:
11	1.85	96	147	.32	7	15	63	20
DOC:	CW:	YG:	MARB:	BF:	REA:	API:	TI:	
13.95	35.75	-.53	.14	-.09	1.29	149	89	

CE:	10	DOC:	13.6
BW:	2.9	CW:	30.4
WW:	93	YG:	-.46
YW:	139	Marb:	.19
ADG:	.29	BF:	-.102
MCE:	9	REA:	.91
Milk:	26	API:	140
MWW:	72	TI:	87
Stay:	18		



LOT 27 - DJF G952

Lot 28 DJF G907

Adj BW: 64 Twin lbs.
Adj WW: 508 lbs.

ASA#3632435 BD: 2/12/19 Tattoo: G907
Homo Black Homo Polled Purebred SM Cow

TRIPLE C SINGLETARY S3H

CCR COWBOY CUT 5048Z

CCR MS 4045 TIME 7322T
WELSHS DEW IT RIGHT 067T

DJF D601

DJF B481

Her dam sells as lot 41 along with her son, K253, who had a 106 WW ratio!

Pasture Sire (5-14 to 7-1-22): **BCLR Cash Flow C820**
Due: 4-1-23

PLAN MATING EST EPD

CE:	BW:	WW:	YW:	ADG:	MCE:	MILK:	MWW:	STAY:
14	.15	91	135	.27	7	14	59	21
DOC:	CW:	YG:	MARB:	BF:	REA:	API:	TI:	
14.55	33.05	-.45	.21	-.07	1.18	158	89	

CE:	14	DOC:	14.8
BW:	-.5	CW:	25.0
WW:	82	YG:	-.30
YW:	114	Marb:	.32
ADG:	.20	BF:	-.058
MCE:	9	REA:	.68
Milk:	24	API:	157
MWW:	65	TI:	87
Stay:	21		



BCLR CASH FLOW

Lot 29 KRJ F8103

Adj BW: 75 lbs.
Adj WW: 564 lbs.

ASA#3468483 BD: 2/23/18 Tattoo: F8103
Homo Black Baldy Homo Polled Purebred SM Cow

JASS/JS OPTIMIZER 58X

HPF OPTIMIZER A512

HPF RACHELS DREAM X590
MCM TOP GRADE 018X

KRJ A387

DOUBLE J MISS X057

Her bull sells as K254 with a 108 WW ratio and a 106 YW ratio!

Pasture Sire (5-14 to 7-1-22): **BCLR Cash Flow C820**
Due: 4-8-23

PLAN MATING EST EPD

CE:	BW:	WW:	YW:	ADG:	MCE:	MILK:	MWW:	STAY:
12	.65	88	139	.32	5	13	57	20
DOC:	CW:	YG:	MARB:	BF:	REA:	API:	TI:	
13.1	39.1	-.52	.05	-.09	1.30	146	84	

CE:	12	DOC:	11.9
BW:	.5	CW:	37.1
WW:	76	YG:	-.44
YW:	123	Marb:	.00
ADG:	.29	BF:	-.105
MCE:	5	REA:	.92
Milk:	23	API:	134
MWW:	61	TI:	76
Stay:	19		

Lot 30 DJF E785

Adj BW: 78 lbs.
Adj WW: 624 lbs.

ASA#3304580 BD: 2/22/17 Tattoo: E785
Homo Black Homo Polled Purebred SM Cow

MR ISHEE CATALYST

RBS BOISE B63

RBS MISS S63
MCM TOP GRADE 018X

DJF A375

DOUBLE J MISS X060

This young cow raised the K263 bull with a 106 YW ratio!

Pasture Sire (5-14 to 7-1-22): **KRJ Grade 8 Bolt J153**
Due: 3-30-23

PLAN MATING EST EPD

CE:	BW:	WW:	YW:	ADG:	MCE:	MILK:	MWW:	STAY:
11	1.7	83	122	.25	5	22	64	16
DOC:	CW:	YG:	MARB:	BF:	REA:	API:	TI:	
12.6	33.95	-.37	.14	-.08	.88	124	76	

CE:	13	DOC:	9.6
BW:	.3	CW:	18.1
WW:	67	YG:	-.53
YW:	94	Marb:	.10
ADG:	.17	BF:	-.106
MCE:	9	REA:	.94
Milk:	26	API:	131
MWW:	60	TI:	73
Stay:	17		



KRJ GRADE 8 BOLT J153

Lot 31 DJF D6118

Adj BW: 92 lbs.
Adj WW: 635 lbs.

ASA#3145794 BD: 2/27/16 Tattoo: D6118
Homo Black Homo Polled Purebred SM Cow

TNT TANKER U263

KRJ B488

DOUBLE J MISS U828
WS INDEPENDENCE T18

DOUBLE J MISS Z281

DOUBLE J MISS S630

Great pedigree with a lot of good daughters and being bred to Jawbreaker will only add to it!

A.I Sire (5-10-22): **OMF/DK KRJ Jawbreaker 15J**
Due: 2-17-23

Pasture Sire (5-14 to 7-1-22): **BCLR Cash Flow C820**

PLAN MATING EST EPD

CE:	BW:	WW:	YW:	ADG:	MCE:	MILK:	MWW:	STAY:
9	2.45	89	132	.27	4	19	64	18
DOC:	CW:	YG:	MARB:	BF:	REA:	API:	TI:	
16.65	37.65	-.50	-.17	-.11	1.08	121	76	

CE:	7	DOC:	12.1
BW:	4.0	CW:	26.7
WW:	81	YG:	-.50
YW:	111	Marb:	-.25
ADG:	.19	BF:	-.103
MCE:	3	REA:	.99
Milk:	14	API:	105
MWW:	55	TI:	65
Stay:	19		



OMF/DK KRJ JAWBREAKER



LOT 32 - DJF D6115

Lot 32 DJF D6115

Adj BW: 80 lbs.
Adj WW: 627 lbs.

ASA#3145840 BD: 2/25/16 Tattoo: D6115
Homo Black Homo Polled 3/4 SM 1/4 AN Cow

S A V BISMARCK 5682

TJ MAKERS MARK 215Y

TJ JEZEBEL 53J
MCM TOP GRADE 018X

DJF A345

DOUBLE J MISS S610

Daughter of lot 52. She raised a top selling growth bull and a bred heifer to Ben Stroh last year!

A.I Sire (5-10-22): **KBHR Hartland H100** Due: 2-17-23
Pasture Sire (5-14 to 7-1-22): **BCLR Cash Flow C820**

PLAN MATING EST EPD

CE:	BW:	WW:	YW:	ADG:	MCE:	MILK:	MWW:	STAY:
12	-.95	75	118	.27	9	26	64	20
DOC:	CW:	YG:	MARB:	BF:	REA:	API:	TI:	
13.0	36.7	-.27	.18	-.064	.69	128	74	
14.65	30.6	-.24	.45	-.04	.67	156	83	



LOT 33 - DJF D698

Lot 33 DJF D698

Adj BW: 59 lbs.
Adj WW: 645 lbs.

ASA#3145792 BD: 2/20/16 Tattoo: D698
Homo Black Homo Polled 5/8 SM 3/8 AN Cow

GW PREMIUM BEEF 021T5

GW ROBUST 605Z

GW MISS GPRD 123X
HART FINAL ANSWER

JBS MISS HF ANSWER 070Z

JBS MISS RANCH HAND 806X

This mating to Heyday should work really well with her added volume like it has in the past with her bulls!

A.I Sire (5-10-22): **RFS Heyday H48** Due: 2-17-23
Pasture Sire (5-14 to 7-1-22): **BCLR Cash Flow C820**

PLAN MATING EST EPD

CE:	BW:	WW:	YW:	ADG:	MCE:	MILK:	MWW:	STAY:
16	-2.1	77	118	.26	8	24	63	14
DOC:	CW:	YG:	MARB:	BF:	REA:	API:	TI:	
13.8	43.9	-.22	.44	-.039	.82	144	85	
16.0	50.1	-.33	.35	-.07	1.03	143	88	

Lot 34 DJF D678

Adj BW: 87 lbs.
Adj WW: 735 lbs.

ASA#3145832 BD: 2/16/16 Tattoo: D678
Homo Black Homo Polled Purebred SM Cow

MR NLC SUPERIOR S6018

TNT TANKER U263

TNT MISS S17
NICHOLS MANIFEST T79

DOUBLE J MISS Y193

DOUBLE J MISS U813

She was the #2 WW heifer in 2016 with 8 EPDs in the top 25%!

Pasture Sire (5-14 to 7-1-22): **BCLR Cash Flow C820**
Due: 3-23-23

PLAN MATING EST EPD

CE:	BW:	WW:	YW:	ADG:	MCE:	MILK:	MWW:	STAY:
9	1.3	82	129	-.29	9	19	60	21
DOC:	CW:	YG:	MARB:	BF:	REA:	API:	TI:	
12.2	43.9	-.47	-.13	-.103	1.11	127	74	
11	1.05	91	142	-.32	7	11	57	21
13.25	42.5	-.53	-.02	-.09	1.39	143	83	



BCLR CASH FLOW

Lot 35 DJF D677

Adj BW: 72 lbs.
Adj WW: 689 lbs.

ASA#3145871 BD: 2/15/16 Tattoo: D677
Homo Black Homo Polled Purebred SM Cow

CCR COWBOY CUT 5048Z

DJF WRANGLER B445

DOUBLE J MISS T739
MR NLC UPGRADE U8676

DJF A3127

DOUBLE J MISS U809

Her 5 heifer calves had a 109 WW ratio! Daughter sells as lot 21.

A.I Sire (5-10-22): **KRJ Dakota Outlaw G974**
Due: 2-17-23

Pasture Sire (5-14 to 7-1-22): **KRJ Grade 8 Bolt J153**

PLAN MATING EST EPD

CE:	BW:	WW:	YW:	ADG:	MCE:	MILK:	MWW:	STAY:
15	-2	85	122	-.23	8	31	73	18
DOC:	CW:	YG:	MARB:	BF:	REA:	API:	TI:	
12.2	28.7	-.54	.09	-.112	1.07	142	85	
10	2.35	96	146	.32	4	28	76	15
12.2	33.9	-.62	.04	-.14	1.16	132	87	



KRJ DAKOTA OUTLAW

Lot 36 DJF D645

Adj BW: 56 lbs.
Adj WW: 630 lbs.

ASA#3145842 BD: 2/9/16 Tattoo: D645
Homo Black Homo Polled Purebred SM Cow

MCM TOP GRADE 018X

LRS UNLIMITED 752A

LRS MS DAKOTA 559R
WHF DESPERADO 212G

DOUBLE J MISS W954

DOUBLE J MISS J902

*Last year's bull sold to Rockin' H Simmentals from Canby, MN.
She is bred back the same way!*

A.I Sire (5-10-22): **KRJ Dakota Outlaw G974** Due: 2-17-23
Pasture Sire (5-14 to 7-1-22): **KRJ Grade 8 Bolt J153**

PLAN MATING EST EPD

CE:	BW:	WW:	YW:	ADG:	MCE:	MILK:	MWW:	STAY:
10	1.4	86	133	.30	4	24	67	17
DOC:	CW:	YG:	MARB:	BF:	REA:	API:	TI:	
8.9	33.75	-.64	-.03	-.14	1.20	129	80	



LOT 36 - DJF D645

CE:	14	DOC:	5.6
BW:	-2.1	CW:	28.4
WW:	65	YG:	-.59
YW:	95	Marb:	-.03
ADG:	-.19	BF:	-.121
MCE:	8	REA:	1.15
Milk:	23	API:	137
MWW:	55	TI:	71
Stay:	21		



KRJ DAKOTA OUTLAW

Lot 37 KRJ D644

Adj BW: 86 lbs.
Adj WW: 652 lbs.

ASA#3145838 BD: 2/9/16 Tattoo: D644
Homo Black Homo Polled Purebred SM Cow

TRIPLE C SINGLETARY S3H

CCR COWBOY CUT 5048Z

CCR MS 4045 TIME 7322T
MCM TOP GRADE 018X

KRJ A387

DOUBLE J MISS X057

*The Hartland herd sire from SRF Simmentals has me excited
for this mating with the good reports coming back!*

A.I Sire (5-10-22): **KBHR Hartland H100**
Due: 2-17-23
Pasture Sire (5-14 to 7-1-22): **BCLR Cash Flow C820**

PLAN MATING EST EPD

CE:	BW:	WW:	YW:	ADG:	MCE:	MILK:	MWW:	STAY:
13	1.0	80	122	.26	8	25	64	22
DOC:	CW:	YG:	MARB:	BF:	REA:	API:	TI:	
15.0	27.6	-.30	.52	-.05	.75	170	90	

CE:	8	DOC:	13.7
BW:	4.8	CW:	30.7
WW:	86	YG:	-.39
YW:	129	Marb:	.32
ADG:	-.26	BF:	-.081
MCE:	4	REA:	.85
Milk:	20	API:	146
MWW:	64	TI:	83
Stay:	22		

Lot 38 KRJ D632

Adj BW: 70 lbs.
Adj WW: 637 lbs.

ASA#3145854 BD: 2/8/16 Tattoo: D632
Homo Black Homo Polled Purebred SM Cow

MCM TOP GRADE 018X

LRS UNLIMITED 752A

LRS MS DAKOTA 559R
LMF MOVIN FORWARD

DOUBLE J MISS Y172

DOUBLE J MISS U853

*Well balanced EPDs with good ratios for WW and YW
on past bulls!*

A.I Sire (5-10-22): **KRJ Dakota Outlaw G974** Due: 2-17-23
Pasture Sire (5-14 to 7-1-22): **KRJ Grade 8 Bolt J153**

PLAN MATING EST EPD

CE:	BW:	WW:	YW:	ADG:	MCE:	MILK:	MWW:	STAY:
10	1.4	86	134	.30	4	26	69	16
DOC:	CW:	YG:	MARB:	BF:	REA:	API:	TI:	
8.05	33.85	-.62	.00	-.14	1.18	130	81	

CE:	14	DOC:	3.9
BW:	-2.1	CW:	28.6
WW:	64	YG:	-.55
YW:	97	Marb:	.02
ADG:	-.20	BF:	-.109
MCE:	8	REA:	1.10
Milk:	27	API:	139
MWW:	59	TI:	73
Stay:	21		



KRJ DAKOTA OUTLAW

Lot 39 DJF D621

Adj BW: 87 lbs.
Adj WW: 682 lbs.

ASA#3145802 BD: 2/6/16 Tattoo: D621
Homo Black Homo Polled Purebred SM Cow

MCM TOP GRADE 018X

LRS UNLIMITED 752A

LRS MS DAKOTA 559R
WSJ ENCORE

DOUBLE J MISS Z2117

DOUBLE J MISS U863

107 WW ratio on 5 heifer calves! Daughter of lot 53.

A.I Sire (5-10-22): **OMF/DK KRJ Jawbreaker 15J**
Due: 2-17-23
Pasture Sire (5-14 to 7-1-22): **BCLR Cash Flow C820**

PLAN MATING EST EPD

CE:	BW:	WW:	YW:	ADG:	MCE:	MILK:	MWW:	STAY:
9	2.15	88	133	.29	4	24	68	18
DOC:	CW:	YG:	MARB:	BF:	REA:	API:	TI:	
13.0	40.75	-.52	-.02	-.11	1.18	129	80	



OMF/DK KRJ JAWBREAKER

Lot 40 KRJ D610

Adj BW: 77 lbs.
Adj WW: 649 lbs.

ASA#3145896 BD: 2/2/16 Tattoo: D610
Homo Black Homo Polled 5/8 SM 3/8 AN Cow

S D S GRADUATE 006X

CCR SANTA FE 9349Z

CCR MS APPLE 9332W
LFC MR BRIL Z204

KRJ ALL THAT B4133

DOUBLE J MISS Z262

*Dam of K205 and K206 bulls, that bred back to
Significant, the father of Turnpike!*

A.I Sire (5-10-22): **WBF Significant B132** Due: 2-17-23
Pasture Sire (5-14 to 7-1-22): **BCLR Cash Flow C820**

PLAN MATING EST EPD

CE:	BW:	WW:	YW:	ADG:	MCE:	MILK:	MWW:	STAY:
10	1.75	83	129	.29	4	26	67	16
DOC:	CW:	YG:	MARB:	BF:	REA:	API:	TI:	
15.55	40.65	-.30	.18	-.06	.88	125	77	

CE:	10	DOC:	9.4
BW:	-2	CW:	28.4
WW:	80	YG:	-.24
YW:	114	Marb:	.10
ADG:	-.22	BF:	-.041
MCE:	4	REA:	.68
Milk:	23	API:	124
MWW:	62	TI:	74
Stay:	19		

Lot 41 DJF D601

Adj BW: 59 lbs.
Adj WW: 607 lbs.

ASA#3145893 BD: 1/27/16 Tattoo: D601
Homo Black Homo Polled 3/4 SM 1/4 AN Cow

HTP SVF IN DEW TIME

WELSHS DEW IT RIGHT 067T
SVF/NJC SENERITA N29
MR NLC ENTREPRENEUR 1227

DJF B481

DOUBLE J MISS Y107

Daughter sells as lot 28. This mating to Outlaw should work very well.

A.I Sire (5-10-22): **KRJ Dakota Outlaw G974** Due: 2-17-23
Pasture Sire (5-14 to 7-1-22): **KRJ Grade 8 Bolt J153**

PLAN MATING EST EPD

CE:	BW:	WW:	YW:	ADG:	MCE:	MILK:	MWW:	STAY:
11	.65	85	129	.28	5	23	66	16
DOC:	CW:	YG:	MARB:	BF:	REA:	API:	TI:	
12.15	27.55	-.48	.10	-.11	.87	138	83	



KRJ DAKOTA OUTLAW

Lot 42 KS MS MADAGASCAR C525

Adj BW: 73 lbs.
Adj WW: 625 lbs.

ASA#2977459 BD: 3/9/15 Tattoo: C525
Red Homo Polled Purebred SM Cow

BCLR SHAMWOW W611

KS MADAGASCAR A889

KS MADAME X424

THSF FREEDOM 300N

KS RANDI R989

ESH45

This Madagascar daughter has produced great offspring with her first working for Steffan Simmentals as a herd sire!

A.I Sire (5-10-22): **TRAX Red River E84**
Due: 2-17-23

Pasture Sire (5-14 to 7-1-22): **OMF/DK KRJ Jawbreaker 15J**

PLAN MATING EST EPD

CE:	BW:	WW:	YW:	ADG:	MCE:	MILK:	MWW:	STAY:
10	1.95	89	150	.38	9	30	75	19
DOC:	CW:	YG:	MARB:	BF:	REA:	API:	TI:	
7.3	47.4	-.35	.09	-.09	.87	142	85	



TRAX RED RIVER

Lot 43 DJF C583

Adj BW: 103 lbs.
Adj WW: 813 lbs.

ASA#3016614 BD: 2/18/15 Tattoo: C583
Homo Black Homo Polled Purebred SM Cow

HTP SVF IN DEW TIME

WELSHS DEW IT RIGHT 067T
SVF/NJC SENERITA N29
KS BLACK DIAMOND W992

DJF A3105

DOUBLE J MISS W965

Produced a 106 WW on 6 calves and a top bull last year that went to Illinois!

A.I Sire (5-10-22): **GQ Conoco F6** Due: 2-17-23
Pasture Sire (5-14 to 7-1-22): **BCLR Cash Flow C820**

PLAN MATING EST EPD

CE:	BW:	WW:	YW:	ADG:	MCE:	MILK:	MWW:	STAY:
8	2.65	88	125	.23	4	23	67	17
DOC:	CW:	YG:	MARB:	BF:	REA:	API:	TI:	
9.8	30.6	-.46	.02	-.10	.97	127	79	

Lot 44 DJF C568

Adj BW: 81 lbs.
Adj WW: 668 lbs.

ASA#3016590 BD: 2/13/15 Tattoo: C568
Homo Black Homo Polled Purebred SM Cow

MR NLC SUPERIOR S6018

TNT TANKER U263

TNT MISS S17

WHF DESPERADO 212G

DOUBLE J MISS S624

DOUBLE J MISS 353

This bigger cow family traces back to our first donor, 353, with stay and carcass EPDs in the top 5%!

A.I Sire (5-10-22): **LBRs Genesis G69** Due: 2-17-23
Pasture Sire (5-14 to 7-1-22): **BCLR Cash Flow C820**

PLAN MATING EST EPD

CE:	BW:	WW:	YW:	ADG:	MCE:	MILK:	MWW:	STAY:
7	2.55	97	145	.30	4	23	71	21
DOC:	CW:	YG:	MARB:	BF:	REA:	API:	TI:	
13.9	50.45	-.38	.41	-.07	1.12	158	95	



LBRs GENESIS



LOT 45 - KRJ ALL THAT B4133

Lot 45 KRJ ALL THAT B4133

Adj BW: 73 lbs.
Adj WW: 700 lbs.

ASA#2898315 BD: 3/10/14 Tattoo: B4133
Homo Black Baldy Homo Polled 1/2 SM 1/2 AN Cow

S A V BRILLIANCE 8077

LFC MR BRIL Z204

MS LFC X021

R&R CHAMBERLAIN X744

DOUBLE J MISS Z262

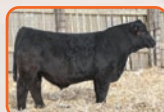
DOUBLE J MISS U828

Great daughters and sons have come from this cow family that is backed by our 828 donor!

A.I Sire (5-10-22): **KRJ Dakota Outlaw G974**
Pasture Sire (5-14 to 7-1-22): **KRJ Grade 8 Bolt J153**
Due: 3-7-23

PLAN MATING EST EPD

CE:	BW:	WW:	YW:	ADG:	MCE:	MILK:	MWW:	STAY:
11	.65	84	122	.24	2	21	63	17
DOC:	CW:	YG:	MARB:	BF:	REA:	API:	TI:	
13.9	38.8	-.19	.18	-.04	.65	128	78	



KRJ GRADE 8 BOLT J153

Lot 46 BEYONCE B039

Adj BW: 90 lbs.
Adj WW: N/A lbs.

ASA#2904725 BD: 3/6/14 Tattoo: B039
Homo Black Homo Polled Purebred SM Cow

SVF STEEL FORCE S701

TJSC OPTIMUS PRIME 12W
KS MISS SHES SO SWEET 9
CNS DREAM ON L186
RM1L MISS DREAM ON W011
HS TAYLOR T882L

This cow has payed her way around here selling both heifers and bulls!

Pasture Sire (5-14 to 7-1-22): **KRJ Grade 8 Bolt J153**
Due: 3-24-23

CE:	14	DOC:	8.5
BW:	-2	CW:	15.5
WW:	62	YG:	-44
YW:	87	Marb:	.13
ADG:	.16	BF:	-.078
MCE:	6	REA:	.86
Milk:	16	API:	120
MWW:	47	TI:	70
Stay:	11		



KRJ GRADE 8 BOLT J153

PLAN MATING EST EPD

CE:	BW:	WW:	YW:	ADG:	MCE:	MILK:	MWW:	STAY:
11	1.45	81	119	.24	3	17	58	13
DOC:	CW:	YG:	MARB:	BF:	REA:	API:	TI:	
12.05	32.65	-.32	.16	-.06	.84	119	75	

Lot 47 KRJ B4118

Adj BW: 87 lbs.
Adj WW: 695 lbs.

ASA#2898205 BD: 3/2/14 Tattoo: B4118
Homo Black Homo Polled 5/8 SM 3/8 AN Cow

MR NLC UPGRADE U8676

JF AMERICAN PRIDE 0987X
WLE CRUISIN SUSAN T26
GLS COMBINATION R2
DOUBLE J MISS Y1118
NY BURGESS CASEY

Produced our high WW heifer in 2019 with her first calf posting a 113 WW and 112 YW ratio to Talsma.

A.I Sire (5-10-22): **KBHR Hartland H100** Due: 2-17-23
Pasture Sire (5-14 to 7-1-22): **BCLR Cash Flow C820**

CE:	10	DOC:	6.7
BW:	2.9	CW:	21.8
WW:	68	YG:	-.31
YW:	106	Marb:	.25
ADG:	.24	BF:	-.056
MCE:	5	REA:	.71
Milk:	18	API:	111
MWW:	52	TI:	68
Stay:	13		

PLAN MATING EST EPD

CE:	BW:	WW:	YW:	ADG:	MCE:	MILK:	MWW:	STAY:
14	.05	71	111	.25	8	24	59	17
DOC:	CW:	YG:	MARB:	BF:	REA:	API:	TI:	
11.5	23.15	-.26	.48	-.04	.68	147	80	

Lot 48 KRJ B440

Adj BW: 78 lbs.
Adj WW: 705 lbs.

ASA#2898208 BD: 2/15/14 Tattoo: B440
Red Homo Polled Purebred SM Cow

GW PREDESTINED 701T

GW REDESTINED 642X
GW MISS ORLANDO 453N
REMINGTON RED LABEL HR
DOUBLE J MISS U849
DOUBLE MISS P465

This red cow has produced a couple of bulls that went to seed stock producers as their new herd sires.

A.I Sire (5-10-22): **TRAX Red River E84**
Pasture Sire (5-14 to 7-1-22): **OMF/DK KRJ Jawbreaker 15J**
Due: 3-9-23

CE:	12	DOC:	12.1
BW:	-.7	CW:	20.5
WW:	66	YG:	-.43
YW:	87	Marb:	.36
ADG:	.13	BF:	-.089
MCE:	6	REA:	.80
Milk:	27	API:	148
MWW:	60	TI:	79
Stay:	19		



OMF/DK KRJ JAWBREAKER

PLAN MATING EST EPD

CE:	BW:	WW:	YW:	ADG:	MCE:	MILK:	MWW:	STAY:
12	.1	81	119	.24	5	26	66	18
DOC:	CW:	YG:	MARB:	BF:	REA:	API:	TI:	
16.65	34.55	-.47	.14	-.10	.99	142	83	



LOT 47 – KRJ B4118

Lot 49 KRJ B405

Adj BW: 68 lbs.
Adj WW: 663 lbs.

ASA#2898337 BD: 2/3/14 Tattoo: B405
Homo Black Homo Polled 5/8 SM 3/8 AN Cow

G A R US PREMIUM BEEF

GW PREMIUM BEEF 021TS
GW MISS LUCKY CHARM 410P
HOOKS SHEAR FORCE 38K
DOUBLE J MISS Z202
DOUBLE J MISS X066

This cow had a top replacement heifer in 2021 and a herd sire for Travis Wadsworth! She is backed by an awesome cow family that has produced a herdsire that is working for Benda Simmentals.

PLAN MATING EST EPD

CE:	BW:	WW:	YW:	ADG:	MCE:	MILK:	MWW:	STAY:
10	1.15	85	134	.31	3	23	66	15
DOC:	CW:	YG:	MARB:	BF:	REA:	API:	TI:	
13.55	30.65	-.50	.16	-.11	1.01	125	80	

CE:	15	DOC:	14.9
BW:	-2.6	CW:	22.2
WW:	62	YG:	-.31
YW:	98	Marb:	.33
ADG:	.22	BF:	-.049
MCE:	5	REA:	.77
Milk:	22	API:	140
MWW:	53	TI:	74
Stay:	18		

A.I Sire (5-10-22): **KRJ Dakota Outlaw G974**
Due: 2-17-23
Pasture Sire (5-14 to 7-1-22): **KRJ Grade 8 Bolt J153**



LOT 49 – KRJ B405

Lot 50 DJF A384

Adj BW: 90 ET lbs.
Adj WW: 677 lbs.

ASA#2763596 BD: 2/18/13 Tattoo: A384
Homo Black Homo Polled 3/4 SM 1/4 AN Cow

MR NLC UPGRADE U8676

R&R CHAMBERLAIN X744
R&R MISS TRAVELER T744
SS GOLDMINE L42

DOUBLE J MISS S657
DOUBLE J MISS P422

This embryo transplant from our late 657 Gold Mine donor is the deep, soggy, easy fleshing type.

A.I Sire (5-10-22): **LBRS Genesis G69** Due: 2-17-23
Pasture Sire (5-14 to 7-1-22): **BCLR Cash Flow C820**

CE:	8	DOC:	12.1
BW:	2.0	CW:	18.1
WW:	64	YG:	-.37
YW:	84	Marb:	-.18
ADG:	-.13	BF:	-.095
MCE:	2	REA:	.53
Milk:	16	API:	111
MWW:	48	TI:	64
Stay:	17		



LBRS GENESIS

PLAN MATING EST EPD

CE:	BW:	WW:	YW:	ADG:	MCE:	MILK:	MWW:	STAY:
8	2.5	90	130	.25	3	23	68	18
DOC:	CW:	YG:	MARB:	BF:	REA:	API:	TI:	
13.65	43.95	-.29	.60	-.06	.87	161	95	

Lot 51 DJF A370

Adj BW: 100 lbs.
Adj WW: 755 lbs.

ASA#2763495 BD: 2/16/13 Tattoo: A370
Homo Black Homo Polled Purebred SM Cow

WLE POWER STROKE

SS GOLDMINE L42
GW MISS LUCKY BUCK 858G
MR NLC UPGRADE U8676

DOUBLE J MISS Y170
JBS MISS G. DESIGN 505M

Has sold 4 bulls in the past to great cattle men. She goes back to the great Chiquita cow family!

A.I Sire (5-10-22): **LBRS Genesis G69** Due: 2-17-23
Pasture Sire (5-14 to 7-1-22): **BCLR Cash Flow C820**

CE:	3	DOC:	11.7
BW:	4.0	CW:	15.7
WW:	73	YG:	-.55
YW:	99	Marb:	.02
ADG:	-.16	BF:	-.115
MCE:	-2	REA:	.91
Milk:	23	API:	110
MWW:	59	TI:	68
Stay:	18		



LBRS GENESIS

PLAN MATING EST EPD

CE:	BW:	WW:	YW:	ADG:	MCE:	MILK:	MWW:	STAY:
5	3.5	95	138	.27	1	26	74	19
DOC:	CW:	YG:	MARB:	BF:	REA:	API:	TI:	
13.45	42.75	-.38	.52	-.07	1.06	155	95	

Lot 52 DJF A345

Adj BW: 76 lbs.
Adj WW: 618 lbs.

ASA#2763568 BD: 2/12/13 Tattoo: A345
Homo Black Homo Polled Purebred SM Cow

MR NLC UPGRADE U8676

MCM TOP GRADE 018X
MCM 513R
WHF DESPERADO 212G

DOUBLE J MISS S610
DOUBLE J MISS 353

Daughter sells as lot 32 and her bull last year was a sale topper.

A.I Sire (5-10-22): **KRJ Dakota Outlaw G974**
Due: 2-17-23
Pasture Sire (5-14 to 7-1-22): **KRJ Grade 8 Bolt J153**

CE:	13	DOC:	10.4
BW:	-1.0	CW:	16.0
WW:	60	YG:	-.47
YW:	87	Marb:	-.22
ADG:	-.17	BF:	-.108
MCE:	7	REA:	.70
Milk:	26	API:	145
MWW:	56	TI:	73
Stay:	21		



KRJ DAKOTA OUTLAW

PLAN MATING EST EPD

CE:	BW:	WW:	YW:	ADG:	MCE:	MILK:	MWW:	STAY:
9	1.95	83	129	.29	4	25	67	17
DOC:	CW:	YG:	MARB:	BF:	REA:	API:	TI:	
11.3	27.55	-.58	.10	-.14	.98	133	81	

Lot 53 DOUBLE J MISS Z2117

Adj BW: 74 lbs.
Adj WW: 588 lbs.

ASA#2655545 BD: 3/17/12 Tattoo: Z2117
Homo Black Homo Polled 3/4 SM 1/4 AN Cow

CNS DREAM ON L186

WSJ ENCORE
TC BANDEVA 0118
SS GOLDMINE L42

DOUBLE J MISS U863
DOUBLE J MISS S617

Longevity is built into this deep, soggy, easy fleshing cow who has a daughter selling as lot 39.

A.I Sire (5-10-22): **OMF/DK KRJ Jawbreaker 15J**
Due: 2-17-23
Pasture Sire (5-14 to 7-1-22): **BCLR Cash Flow C820**

CE:	11	DOC:	9.9
BW:	-.5	CW:	17.6
WW:	54	YG:	-.37
YW:	74	Marb:	-.08
ADG:	-.12	BF:	-.068
MCE:	5	REA:	.74
Milk:	13	API:	110
MWW:	40	TI:	58
Stay:	16		



OMF/DK KRJ JAWBREAKER

PLAN MATING EST EPD

CE:	BW:	WW:	YW:	ADG:	MCE:	MILK:	MWW:	STAY:
12	.2	75	113	.24	5	18	56	16
DOC:	CW:	YG:	MARB:	BF:	REA:	API:	TI:	
15.55	33.1	-.44	.00	-.09	.96	129	75	



LOT 54 - DOUBLE J MISS Z228

Lot 54 DOUBLE J MISS Z228

Adj BW: 87 lbs.
Adj WW: 616 lbs.

ASA#2655628 BD: 2/14/12 Tattoo: Z228
Homo Black Baldy Homo Polled 1/2 SM 1/2 AN Cow

STF MR MOMENTUM H508

SVF/NJC MO BETTER M217
NJC SVF ANTOINETTE K205
O C C ANCHOR 771A

DOUBLE J MISS R589
E A RIGHT TIME 211G

This cow has produced the high growth, eye appealing bulls that are easy to sell. Her past two Outlaw heifers have been at the top and she is bred back the same way!

CE:	7	DOC:	11.5
BW:	4.7	CW:	26.9
WW:	69	YG:	-.14
YW:	112	Marb:	-.15
ADG:	-.27	BF:	-.037
MCE:	2	REA:	.39
Milk:	21	API:	104
MWW:	55	TI:	63
Stay:	15		

A.I Sire (5-10-22):
KRJ Dakota Outlaw G974
Due: 2-17-23
Pasture Sire
(5-14 to 7-1-22):
KRJ Grade 8 Bolt J153

PLAN MATING EST EPD

CE:	BW:	WW:	YW:	ADG:	MCE:	MILK:	MWW:	STAY:
6	4.8	88	141	.34	2	23	66	14
DOC:	CW:	YG:	MARB:	BF:	REA:	API:	TI:	
11.85	33.0	-.42	.07	-.10	.82	107	74	

KRJ DAKOTA OUTLAW G974

ASA#3632499 BD: 2/23/19 Tattoo: G974 Adj WW: 777 Adj YW: 1438
Homo Black Homo Polled Purebred SM Bull

CE:	5	DOC:	12.2
BW:	4.8	CW:	39.8 15%
WW:	107 1%	YG:	-.69 1%
YW:	171 1%	Marb:	-.02
ADG:	.40 1%	BF:	-.164 1%
MCE:	1	REA:	1.25 3%
Milk:	24	API:	116
MWW:	78 4%	TI:	89 15%
Stay:	12		

WBF SIGNIFICANT B132
RUBYS TURNPIKE 771E
RUBYS MISS CLEO 240Z
LLSF UPRISING Z925
BRKC DAPHNE DY37
HSF/HS SCARLETT Y165
SEMEN \$50 – Owned by Beitelspacher Ranch



OMF/DK KRJ JAWBREAKER 15J

ASA#3893493 BD: 2/7/21 Tattoo: 15J Adj WW: 708 Adj YW: 1245
Homo Black Homo Polled Purebred SM Bull

CE:	12	DOC:	21.4 1%
BW:	0.8	CW:	47.9 5%
WW:	96 5%	YG:	-.50 15%
YW:	151 4%	Marb:	-.09
ADG:	.34 5%	BF:	-.117 5%
MCE:	5	REA:	1.16 10%
Milk:	24	API:	131
MWW:	72 15%	TI:	86
Stay:	16		

MR SR 71 RIGHT NOW E1538
MR SR MIC DROP G1534
MISS SR C1534
MR NLC UPGRADE U8676
OMF/DK CHEERS C88
OMF/KB FINESSE Y4
SEMEN \$30



BCLR CASH FLOW C820

ASA#3071303 BD: 3/5/15 Tattoo: C820 Adj WW: 923 Adj YW: 1504
Homo Black Homo Polled Purebred SM Bull

CE:	13	DOC:	14.5 15%
BW:	0.8	CW:	41.1 15%
WW:	100 2%	YG:	-.58 2%
YW:	155 2%	Marb:	.08
ADG:	.35 4%	BF:	-.072
MCE:	6	REA:	1.66 1%
Milk:	4	API:	152 15%
MWW:	54	TI:	91 10%
Stay:	21 10%		

S D S GRADUATE 006X
CCR WIDE RANGE 9005A
CCR MS APPLE 9332W
TRIPLE C INVASION R47K
BCLR MISS MONICA U820
TNT MISS P82



KRJ GRADE 8 BOLT J153

ASA#3929075 BD: 2/16/21 Tattoo: J153 Adj WW: 750 Adj YW: 1486
Homo Black Homo Polled 5/8 SM 3/8 AN Bull

CE:	8	DOC:	15.7 15%
BW:	3.1	CW:	49.7 10%
WW:	100 2%	YG:	-.20
YW:	150 4%	Marb:	.18
ADG:	.32 15%	BF:	-.044
MCE:	1	REA:	.81
Milk:	19	API:	122
MWW:	69 15%	TI:	84
Stay:	15		

ACW IRONHIDE 395Y
TJ FROSTY 318E
TJ 58B
CCR COWBOY CUT 5048Z
KRJ G997
DOUBLE J MISS Z2123

Owned by the John Cody Family



R&R KRJ GOLDEN BOOK H0135

ASA#3786038 BD: 3/25/20 Tattoo: H0135 Adj WW: 747 Adj YW: 1321
Homo Black Homo Polled Purebred SM Bull

CE:	19 1%	DOC:	13.7
BW:	-2.4 3%	CW:	33.5
WW:	90 15%	YG:	-.41
YW:	138 15%	Marb:	.24
ADG:	.30 15%	BF:	-.067
MCE:	12 1%	REA:	1.05
Milk:	29 15%	API:	170 4%
MWW:	74 10%	TI:	95 5%
Stay:	21 10%		

HOOK'S BEACON 56B
KBHR HIGH ROAD E283
WS MISS SUGAR C4
CCR COWBOY CUT 5048Z
R&R DREAMS E769 ET
R&R SWEET DREAMS T701

SEMEN \$30 – In 2021, I went on the search for a new outcross calving ease sire. I came across Golden Book & with his combination of unmatched presence & incredible EPD profile, I saw the potential he could add to our operation. He had been used heavily through artificial insemination & natural service with calving reports being well accepted by various seedstock & commercial cattlemen. In the fall of 2022, Golden Book passed unexpectedly just as he was becoming to be a proven herd sire. Unfortunately we did not get a picture before his passing, but those that had seen him were very impressed.

SEE YOU FRIDAY, JANUARY 27 • SALE TIME 12:00 NOON!

DOUBLE J FARMS 49TH ANNUAL *Bull & Mature Herd Dispersal Sale*

EVERY 2016 MODEL & OLDER FEMALE SELLS – ALSO ANY FEMALE CALVING AFTER MARCH 15TH

Friday, January 27, 2023 12:00 Noon • 48672 252nd Street • Garretson, SD 57030



Selling 63 Bulls & 54 Bred Females plus Embryos!

PLEASE BRING THIS CATALOG TO THE SALE WITH YOU SALE DAY!

KIPP JULSON
48672 252nd Street
Garretson, SD 57030

FIRST CLASS
MAIL
U.S. POSTAGE
PAID
MN MAIL

**Double J
Farms**

TIME DATED MATERIAL!